

BUBEN&ZÖRWEIG EDITION **2016/2017**

# VISIONARY THINKING



The museums of today are home to the masterpieces of bygone times. They are proof that an outstanding idea is always the beginning of an outstanding creation. A passion for innovation. The urge to do it differently, to do it better than anyone else. The unique, the inimitable that lasts for generations.

We at BUBEN&ZORWEG consider the skilled perfection with which our ancestors created things that work as well today as they did when they were created as a paradigm and a commitment. Today, we do many things differently, in fact virtually everything. We work with the tools of our times, with computers, lasers, and soon with quantum technology. We have fantastic new materials at our disposal that cause the eyes of our designers to sparkle in view of the fascinating possibilities they promise.

This is what the masterpieces of our times are made of, and we hope that future generations will remember and be inspired by the best creations. Masterpieces are what they always have been: the best that creative minds and skilled hands create during their era.

Masterpieces are of timeless consistency.





# STAYING AHEAD OF THE CURVE

Inspiration means to push the boundaries of possibility. To go beyond boundaries. To enter uncharted waters. To be guided by a vision. Fascination arises when something surprising is achieved in a world that believes it has already seen it all.

We thrive on our passion for turning the unique into reality – for turning creations from the realm of dreams into the art of innovation and perfect craftsmanship.

A dedication to perfection accompanies us on every step of the journey, from the first vague idea to the enthralling end product. Luxury means not having to compromise.









PRIVATE MUSEUM  
PAGE 18



GRANDE INFINITY  
PAGE 22



SOLITAIRE  
PAGE 26



GRAND COLLECTOR  
PAGE 30



GRAND COLLECTOR INBUILT  
PAGE 32



GRAND COLLECTOR XL  
PAGE 34



MIRAGE  
PAGE 36



GRANDE PRÉCISION  
PAGE 40



OBJET DE TEMPS II  
PAGE 44



XTREME  
PAGE 48



THE TREASURY  
SEE WEBSITE\*



VANGUARD  
SEE WEBSITE\*



OBJET DE TEMPS I  
SEE WEBSITE\*



PYTHON  
SEE WEBSITE\*

\* Find these products exclusively on  
[www.buben-zorweg.com](http://www.buben-zorweg.com)

PAGE 56

# TIME MOVER®



TIME MOVER HANDWOUND®  
PAGE 64



REVOLUTION  
PAGE 66



PHANTOM  
PAGE 68



SPIRIT  
PAGE 70



VANTAGE  
PAGE 72



SAFE MASTER  
PAGE 74



QUANTUM  
PAGE 76



COLLECTOR  
PAGE 78



COLLECTOR 32 DELUXE  
PAGE 79



EVOLUTION  
PAGE 80



COSMOPOLITAN  
PAGE 81



TRAVELLER  
SEE WEBSITE\*



VENICE DELUXE  
SEE WEBSITE\*



PAGE 86

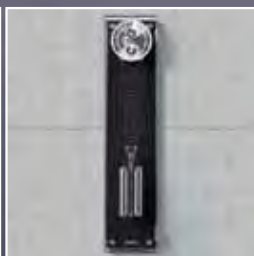
# FINE TIMEPIECES



INFINITY  
PAGE 92



SILHOUETTE  
PAGE 94



PARAGON  
PAGE 96



ELLIPSE  
PAGE 98



ALLURE  
PAGE 102



AGARTOS  
PAGE 104



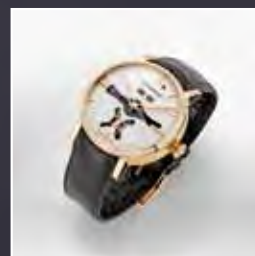
PANTHEON  
PAGE 106



ARTEMIS  
PAGE 107



SONATA  
PAGE 107



ONE  
PAGE 108



X-007 EXTREME / X-007  
PAGE 122



MAGNUM  
PAGE 126



GALAXY  
PAGE 130



COLLECTOR SAFE  
PAGE 134



COLLECTOR SAFE XL  
PAGE 135



COLLECTOR SAFE XXL  
PAGE 136



COLLECTOR SAFE INBUILT  
PAGE 137



GRAND CONNOISSEUR  
PAGE 139



GRAND CONNOISSEUR XXL  
PAGE 139



TITAN  
SEE WEBSITE\*

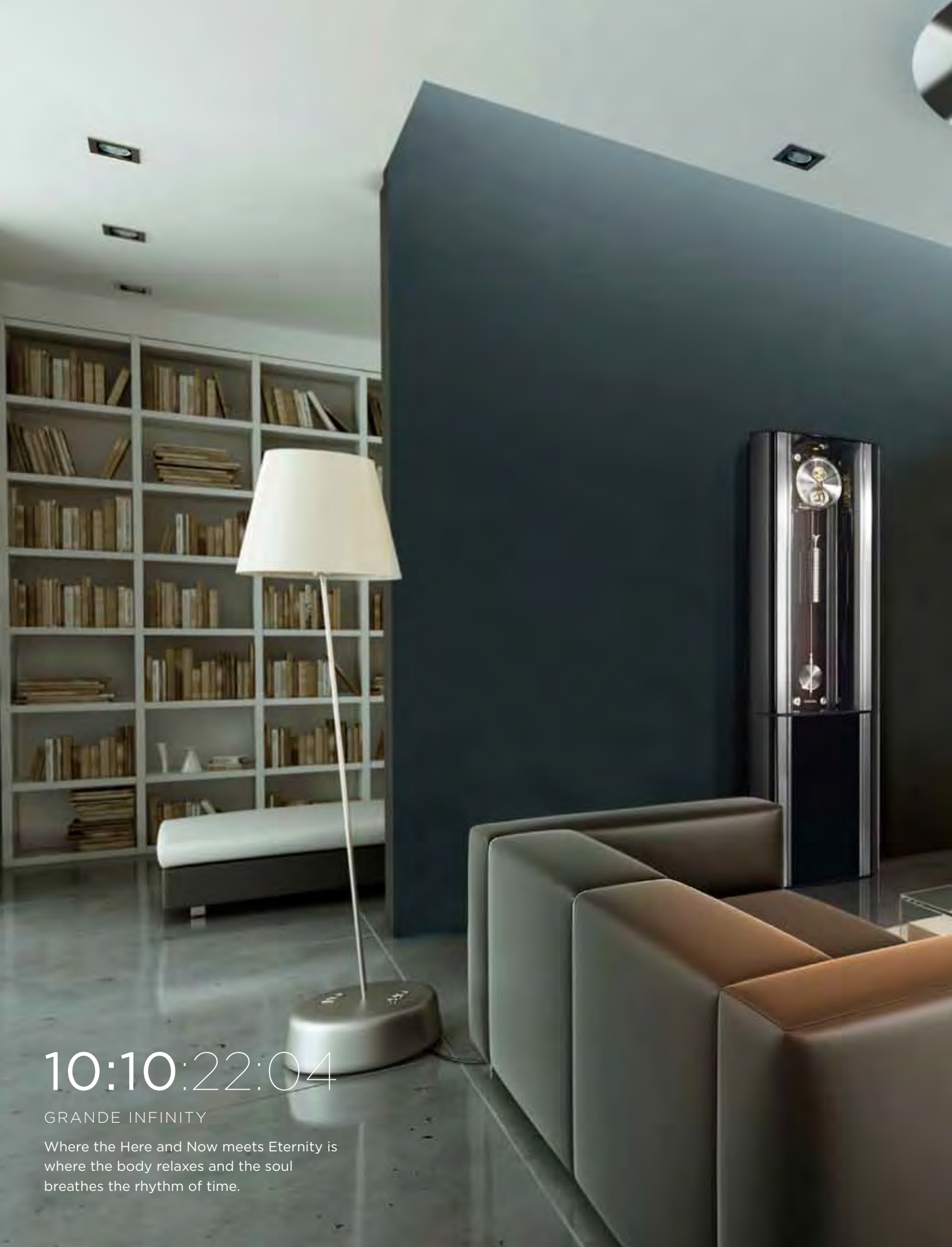


VANGUARD SAFE  
SEE WEBSITE\*

\* Find these products exclusively on  
[www.buben-zorweg.com](http://www.buben-zorweg.com)

PAGE 116

SAFES



10:10:22:04

GRANDE INFINITY

Where the Here and Now meets Eternity is  
where the body relaxes and the soul  
breathes the rhythm of time.









# OBJECTS OF TIME®

Time for feelings ... the innovative design and unique values that an OBJECT OF TIME® from the House of BUBEN&ZORWEG represents bring emotions to life. Time at its most beautiful, sophisticated mechanics surprise through smooth-running perfection. The finest materials entice the senses. If time is money then an OBJECT OF TIME® is luxury. BUBEN&ZORWEG wishes you ample time to enjoy unique moments. For time at its most beautiful.



12:22:19:35

LIVING WITH TIME. BEING AT HOME  
IN TIME. TRUSTING IN TIME. ENJOYING  
PRECIOUS TIME

PRIVATE MUSEUM  
PAGE **18**

GRANDE INFINITY  
PAGE **22**

SOLITAIRE  
PAGE **26**

GRAND COLLECTOR  
PAGE **30**

GRAND COLLECTOR INBUILT  
PAGE **32**

GRAND COLLECTOR XL  
PAGE **34**

MIRAGE  
PAGE **36**

GRANDE PRÉCISION  
PAGE **40**

OBJET DE TEMPS II  
PAGE **44**

XTREME  
PAGE **48**







# OBJECTS OF TIME®

## PERFECT MASTERPIECES OF TIME

**N**ow that our innovations have conquered the market and now that the House of BUBEN&ZORWEG has set new benchmarks in the world of exclusive watches with FINE TIMEPIECES and has thrilled collectors of precious items with elegant humidors and safes, we have brought all these things and more together in our OBJECTS OF TIME® to create masterpieces that go beyond the boundaries of what was previously considered possible.

What once began with the “Objet de Temps I”, the world’s first combination of clock and luxurious ambience for the watch enthusiast with a clear perception of design and value, today forms the centrepiece of the BUBEN&ZORWEG portfolio.

The concept behind the OBJECTS OF TIME® is to create a holistically integrated, precious ambience that addresses all of the senses and fathoms the dimensions of exceptional taste.

Exquisite materials, innovative technology, the unsurpassed highlights of FINE TIMEPIECES, optimum security solutions and fascinating design hand-crafted by masters of their art become solitary objects of desire for people with a sense for the exclusive aesthetics of perfection. Practically all OBJECTS OF TIME® are manufactured in strictly limited editions. Thus, they themselves become valuable collector’s pieces, rare treasures for passionate aficionados of the unusual.

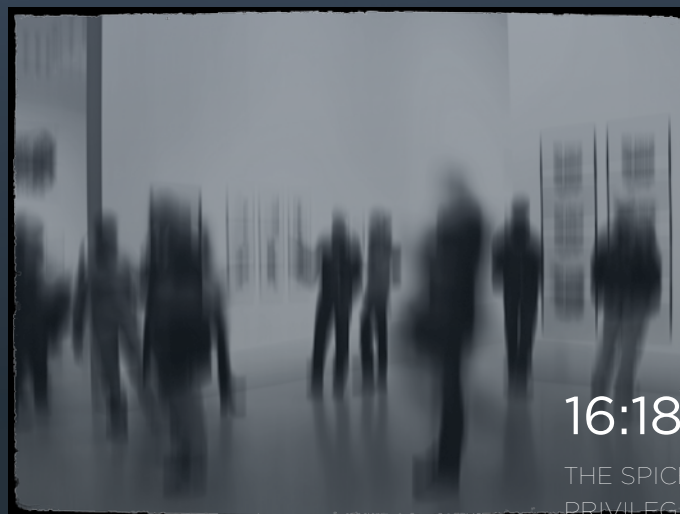




# PRIVATE MUSEUM

Rare preciosities are the pride and joy of the passionate collector. And because a joy shared is a joy doubled, these admirable pieces deserve to be on display – in an environment that discreetly yet effectively emphasises the beauty of the objects on show. All with the security technology that measures up to the methods employed by the great museums of this world.

PRIVATE MUSEUM brilliantly fulfils both aspects, namely security and aesthetic appeal – as a masterpiece of German engineering, creative design and innovative technology.



16:18:52:99

THE SPICE OF LIFE: THE  
PRIVILEGE OF OWNING ART.  
THE JOY OF SHARING IT.

# PRIVATE MUSEUM

Impressive time and again: the bullet-proof glass pane of the PRIVATE MUSEUM slides elegantly into the wall to reveal the precious treasures the proud owner wishes to present. And even then, an invisible laser grid makes sure there is no unauthorised access...

One is convinced to have seen the innovative security measures incorporated in the PRIVATE MUSEUM in a movie... the optional mirrored spy-glass that becomes transparent at the touch of a button... the biometric fingerprint identification of the high-tech locking system, naturally VdS-certified... the LED technology that shows off the objects at their best.

An optionally available high-end stereo system discreetly integrated in the wall panel enhances the pleasurable experience of relishing works of art. And because private collections are something highly personal: all aspects of the PRIVATE MUSEUM can be adapted to reflect personal preferences.



## PRIVATE MUSEUM - FACTS

- High-security glass, bullet-proof and extreme resistant against mechanical attacks, 22 mm thickness
- 2,5 mm Stainless steel security compartment, fireresistant insulation
- Wood housing with 10 layers of highgloss lacquer
- German VdS certified biometric fingerprint locking system, developed for high-security safes
- Integrated Laser curtain, prevents unauthorized access in open condition
- Inbuilt alarm system, interface to the house alarm system
- Vertical, electromechanical opening & closing mechanism which slides the high-security glass extremely silent, German industrial standard
- State-of-the-art, adjustable LED lighting technology with fading function
- Interior in finest black velour
- 2 drawers
- Bespoke interior options are available

## TECHNICAL DATA

- Inner showcase dimensions: 765 x 1270 mm, variable depth from 200-500 mm
- Mains operation

## ALSO AVAILABLE

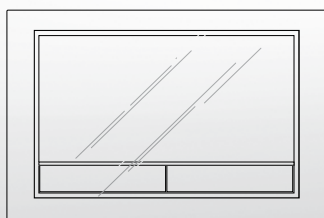
- Optional two-way mirror glass
- Optional humidor
- Optional Safe SI-80



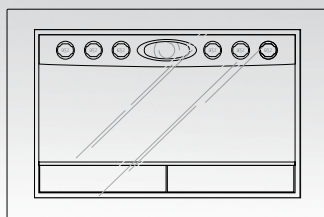
Private Museum Inbuilt

## INTERIOR

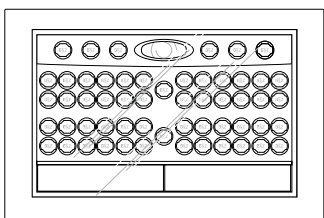
Universal



Signature

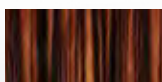


Collector



## VERSIONS

MACASSAR

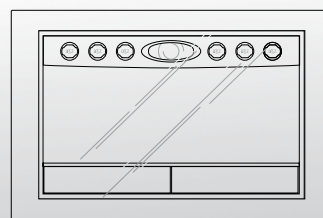


EBONY GRIGIO

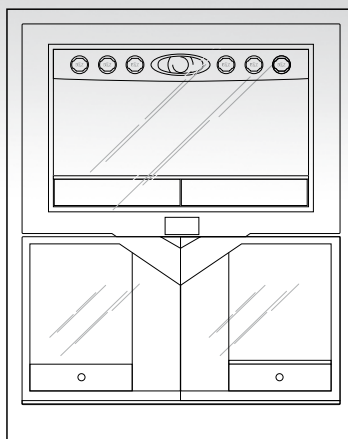


## OPTIONS

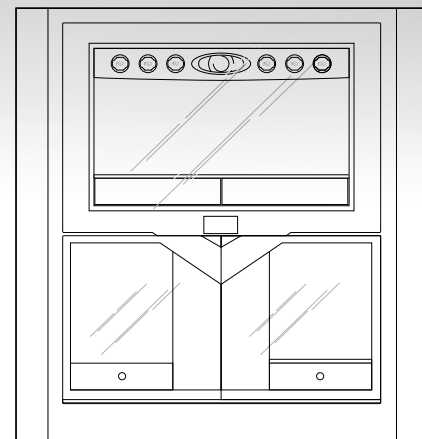
Private Museum Inbuilt



Grande Private Museum Inbuilt



Grande Private Museum







# GRANDE INFINITY

The relaxed enjoyment of time in the rhythm of a majestically swinging pendulum... fascinatingly implemented in the GRANDE INFINITY. Of sublime charisma, this masterpiece is much more than a magnificent clock. Its surfaces and interior are characterised by exquisite materials... an interior that is full of surprises. One that combines certified security and attractive presentation in a way never seen before. Innovation, design, perfection – the ingredients of a precious solitaire.



00:45:52:81

ALL THAT IS EXISTS IN TIME. ONLY THE  
BEST THINGS APPEAR TO BE TIMELESS.  
THEIR OWNER FAVOURED BY FORTUNE.

# GRANDE INFINITY



At first glance it is the FINE TIMEPIECE at the centre of the GRANDE INFINITY that catches the eye: "Alpha 01 – Pendulum World Time". It is a horological masterpiece and a product of our own German manufactory, from initial concept through innovative engineering to perfect production. Limited editions for the versions with the World Time Tourbillon or Orbit Tourbillon make the GRANDE INFINITY a rare and unique collector's piece.

The fascinating Swing&Hide mechanism on the flanks of the classic, self-assured design creates the impression that the collection of precious watches mounted on TIME MOVER® elements appears from nowhere. Another feature that is only visible after opening: the safe in the base of the GRANDE INFINITY. VdS-certified. Customizable configuration.

Exquisite materials such as Italian nappa leather, precious tropical woods and perfectly applied high-quality lacquers characterise the appearance of this masterpiece of German craftsmanship: a unique combination of design, innovation and perfection.

## GRANDE INFINITY – FACTS LIMITED EDITION 75 PCS.

- TIME MOVER® for 20 watches
- 4 TIME MOVER® and storage space in the safe (optional 8 or 12 TIME MOVER®)
- Magic "Swing & Hide" mechanism
- Remote control for lighting and the magic "Swing & Hide" mechanism
- Macassar wood-aluminium housing with 10 layers of high-gloss piano stardust lacquer
- Interior in finest Italian nappa leather
- BUBEN&ZORWEG Safe SI-70 with **VdS-I** (German Security Certification)
- Storage space for artefacts and valuables in the safe
- Safe door covered with handstitched Italian nappa leather
- State-of-the-art LED lighting technology with fading function
- Finest German craftsmanship
- Optionally available with BUBEN&ZORWEG Alarm System
- Optionally available with BUBEN&ZORWEG Tracking System
- For technical details see page 144/145



## TECHNICAL DATA

- 1940 x 620 x 360 mm (closed)
- 1940 x 720 x 360 mm (open)
- 250 kg
- Mains operation

## VERSIONS

### PIANO STARDUST



### MACASSAR



### EBONY GRIGIO



### POPLAR BURL WOOD





## FINE TIMEPIECE

- BUBEN&ZORWEG Alpha 01 Pendulum Clock
- BUBEN&ZORWEG Manufacture movement Calibre "Alpha 01 - Pendulum World Time"
- Dead-beat Graham escapement with pallets made of hardened steel
- Seconds pendulum
- Second indication
- Main wheel with constant power and remontoire
- World time indication
- Weight drive (3,000 g) with a ball-bearing deflection roller
- 31 day power reserve
- Fine-polished, gold-plated wheels
- 6 high precision ball bearings and 6 rubies
- Polished pinions made of hardened steel
- Precision-milled and rhodanised plates made of hard brass with 5 columns
- Carbon fibre pendulum rod with extremely low heat expansion coefficient
- Pendulum bob with fine regulating system
- Rhodanised dial with sunray Brush
- 500 hours BUBEN&ZORWEG „Excellence Control"



## ALSO AVAILABLE:


**FINE TIMEPIECE  
WORLD TIME TOURBILLON  
LIMITED EDITION 25 PCS.**

- Flying minute tourbillon with incorporated BUBEN&ZORWEG initials
- Swiss escapement with screw balance wheel and 11 jewel bearings
- 15 day German precision movement with constant power
- Indication of world time, date and power reserve
- Exquisite, ruthenium-coated dial with sunray-brush, goldstone bezel and glass chapter ring
- 500 hours BUBEN&ZORWEG "Excellence Control"


**FINE TIMEPIECE  
ORBIT TOURBILLON  
LIMITED EDITION 25 PCS.**

- Unique BUBEN&ZORWEG ORBIT TOURBILLON, a rotating flying minute tourbillon on the minute hand
- Swiss escapement with screw balance wheel and 11 jewel bearings
- 15 day German precision movement with constant power
- Power reserve display
- Gold-plated cogs, aluminium hand with counterweight
- Exquisite, ruthenium-coated dial with sunray-brush and glass chapter ring
- 500 hours BUBEN&ZORWEG "Excellence Control"





# SOLITAIRE

Timeless pieces are unaffected by the tumultuous happenings of day-to-day life. The relaxed energy of consistency and authenticity without compromise is based on a single thought: only the real thing can be a real friend of time, surviving the passing of time. The SOLITAIRE from the House of BUBEN&ZORWEG is the product of this design philosophy, right down to the smallest detail. A monument to perfection. Unique masterpieces.



08:45:39:17

NO MATTER HOW MUCH TIME  
IS AROUND THE CORNER,  
WHAT IS REALLY IMPORTANT  
IS THE HERE AND NOW.



# SOLITAIRE

Enjoying the good things in life – that is what the SOLITAIRE is all about.

The 46 TIME MOVER® watch winders represent a dedication to special watches, perfect for the passionate collector.

An innovative, high-tech presence topped off with a FINE TIMEPIECE such as the WORLD TIME TOURBILLON or the ORBIT TOURBILLON.

Wherever you look, you will be satisfied by the master craftsmanship. There is an integrated HiFi system for musical enjoyment, and a bar module and a humidor to allow you to indulge in a drop of cognac or a good cigar. The unit includes a high-security safe to ensure that your valuables are secure. Security: The unit also includes an integrated alarm system which is optionally available. A product which is more than the sum of its parts: it is an indescribable feeling to be the owner of a SOLITAIRE from the House of BUBEN&ZORWEG.



## SOLITAIRE - FACTS

- 46 TIME MOVER® (8 of them in the safe)
- BUBEN&ZORWEG Safe SI -60
- Additional storage for watches and jewellery in 2 drawers
- Humidor with a German electronic humidifying system and a bar/presentation module
- 16 mm bullet-proof glass doors, robust stainless steel hinges
- BUBEN&ZORWEG safety lock Mechanism
- BUBEN&ZORWEG HiFi system Monolog 10 with music streaming and Bluetooth
- Integrated thermometer and hygrometer displays
- State-of-the-art LED lighting technology with fading function
- Optionally available with two-way mirror spy glass
- Optionally available with BUBEN&ZORWEG Alarm System
- Optionally available with BUBEN&ZORWEG Tracking System
- Finest German craftsmanship
- For technical details see page 144/145

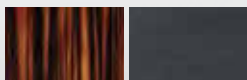
## TECHNICAL DATA

- 1905 x 1035 x 540 mm
- 350 kg
- Mains operation

## DESIGN

## MACASSAR

Hand-crafted macassar housing, high-gloss lacquer finish, interior in fine Italian nappa leather, black



FINE TIMEPIECE  
SOLITAIRE WORLD TIME  
TOURBILLON  
**LIMITED EDITION 75 PCS.**

- Flying minute tourbillon with incorporated BUBEN&ZORWEG initials
- Swiss escapement with screw balance wheel and 11 jewel bearings
- 15 day German precision movement with constant power
- Indication of world time, date and power reserve
- Exquisite, ruthenium-coated dial with sunray-brush, goldstone bezel and glass chapter ring
- 500 hours BUBEN&ZORWEG "Excellence Control"



FINE TIMEPIECE  
SOLITAIRE ORBIT TOURBILLON  
**LIMITED EDITION 75 PCS.**

- Unique BUBEN&ZORWEG ORBIT TOURBILLON, a rotating flying minute tourbillon on the minute hand
- Swiss escapement with screw balance wheel and 11 jewel bearings
- 15 day German precision movement with constant power
- Power reserve display
- Gold-plated cogs, aluminium hand with counterweight
- Exquisite, ruthenium-coated dial with sunray-brush and glass chapter ring
- 500 hours BUBEN&ZORWEG "Excellence Control"







# GRAND COLLECTOR

## GRAND COLLECTOR - FACTS

- 31 TIME MOVER® (8 of them in the safe)
- BUBEN&ZORWEG Safe SI-80
- BUBEN&ZORWEG signature clock with a stainless steel bezel
- 1 storage drawer (Gentleman Insert)
- Interior in finest velour and Italian nappa leather, black
- State-of-the-art LED lighting technology with fading function
- Stainless steel portholes
- Swiss security lock
- Height-adjustable stainless steel feet
- Optional BUBEN&ZORWEG HiFi system Monolog 10 with music streaming and Bluetooth
- Optionally available with BUBEN&ZORWEG Alarm System
- Optionally available with BUBEN&ZORWEG Tracking System
- Finest German craftsmanship
- For technical details see page 144/145

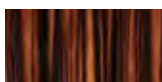
## TECHNICAL DATA

- 1820 x 555 x 505 mm
- 350 kg
- Mains Operation



## VERSIONS (HIGH GLOSS)

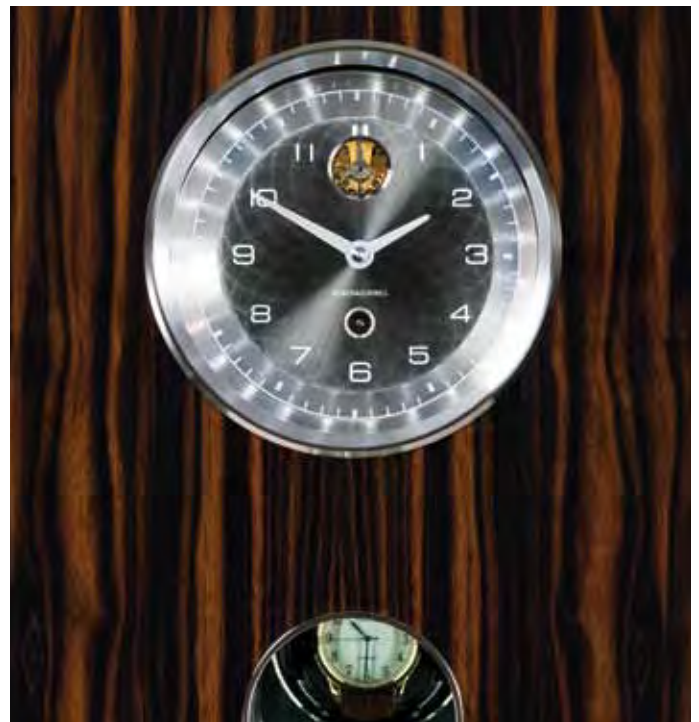
MACASSAR



EBONY GRIGIO



True value is what is on the inside – people with this frame of mind will find this philosophy is reflected perfectly in the GRAND COLLECTOR from the House of BUBEN&ZORWEG. Elegant understatement in a timeless, classic design on the outside, innovative high-tech fittings on the inside. 31 TIME MOVER® watch winders for precious wrist watches, a German high-security safe for valuables that are to be kept out of sight, the BUBEN&ZORWEG signature clock ... a valuable vessel for valuable objects.





## GRAND COLLECTOR INBUILT - FACTS

- 26 TIME MOVER® (8 of them in the safe)
- BUBEN&ZORWEG Safe SI-80
- BUBEN&ZORWEG signature clock with a stainless steel bezel
- Hand-crafted housing
- Interior in finest Italian nappa Leather
- 2 storage drawers (Gentleman insert and universal drawer)
- State-of-the-art LED lighting technology with fading function
- Electronic lock with code input
- Optionally available with BUBEN&ZORWEG Alarm System
- Optionally available with BUBEN&ZORWEG Tracking System
- Finest German craftsmanship
- For technical details see page 144/145

## VARIOUS DOOR VERSIONS

- Two-way mirror spy glass
- Glass doors (tinted)

## TECHNICAL DATA

- 1.886 x 568 x 539 mm
- 280 kg
- Mains Operation



# GRAND COLLECTOR INBUILT

The House of BUBEN&ZORWEG offers a wide range of beautiful objects which you can use to display your most beautiful pieces. For those who prefer a more discreet kind of storage, we offer products such as the GRAND COLLECTOR INBUILT which can be integrated into walk-in wardrobes. Optimal storage for expensive wrist watches, valuable pieces of jewellery and other jewels with a German-made high-security safe and legendary TIME MOVER® watch winding know-how. Unauthorised access denied ...





# GRAND COLLECTOR XL

Size doesn't matter? Passionate collectors have a special trait: they do not want to be limited by superficial matters. Their passion grows as time goes on. The GRAND COLLECTOR XL by BUBEN&ZORWEG helps you to extend your horizons. 59 TIME MOVER® modules offer optimal storage for an endless range of elegant timekeepers, keeping them safe and sound in a stylish, understated design with clean, classic lines. The most valuable pieces can be kept secure in a German-made high-security safe. And what better way to top off a good day than with a glass of wine or a drop of cognac and a full-flavoured cigar which has been optimally aged in the optional integrated humidor!?



## COLLECTOR XL - FACTS

- 51 TIME MOVER®
- 5 storage drawers (1 Gentleman insert, 2 watch inserts, 1 jewellery insert and a universal drawer, for details see page 144)

## GRAND COLLECTOR XL - FACTS

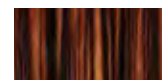
- 59 TIME MOVER® (8 of them in the safe)
- BUBEN&ZORWEG Safe SI -60
- BUBEN&ZORWEG signature clock with a stainless steel bezel
- 2 additional universal storage modules
- BUBEN&ZORWEG security lock mechanism
- Interior in finest velour and Italian nappa leather
- Integrated thermometer, hygrometer and barometer displays
- State-of-the-art LED lighting technology with fading function
- Stainless steel portholes
- Height-adjustable stainless steel feet
- Optional BUBEN&ZORWEG HiFi system Monolog 10 with music streaming and Bluetooth
- Optional humidor with a German electronic humidifying system and a bar/presentation module
- Optionally available with BUBEN&ZORWEG Alarm System
- Optionally available with BUBEN&ZORWEG Tracking System
- Finest German craftsmanship
- For technical details see page 144/145

## TECHNICAL DATA

- 1820 x 915 x 505 mm
- 400 kg
- Mains Operation

## VERSIONS (HIGH GLOSS)

### MACASSAR



### EBONY GRIGIO





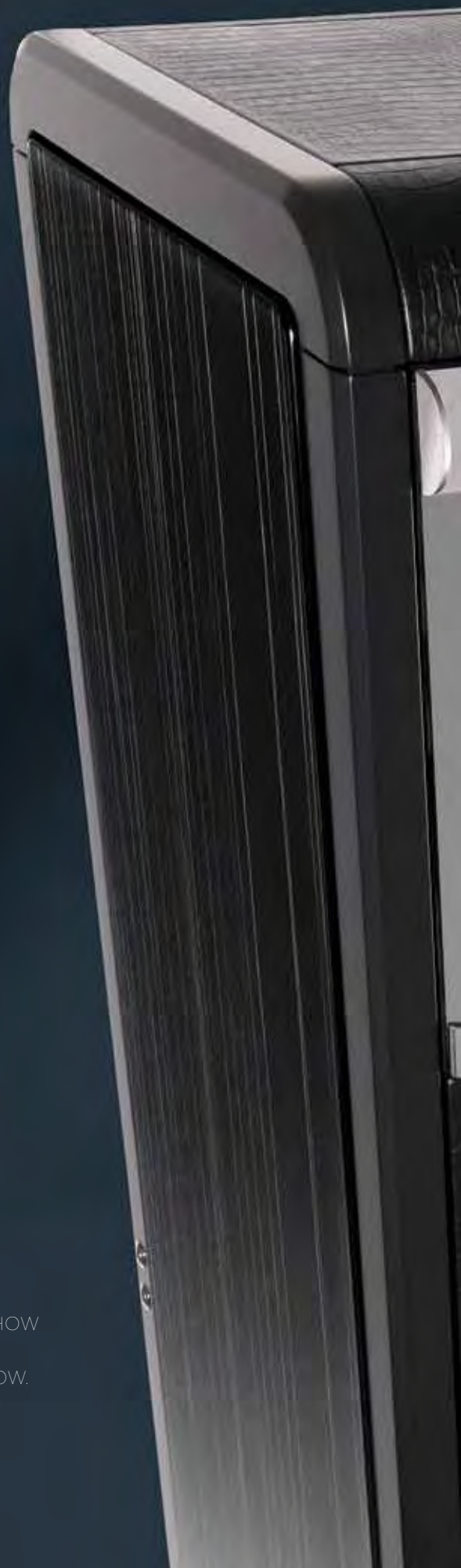
# MIRAGE

The language of sophisticated materials and innovative designs, the game of shapes, light and transparency are unmistakable elements of the MIRAGE. This perfectly-designed piece of master craftsmanship radiates profound solidness, giving valuable collector pieces a fitting and safe place to rest, with a German-made safe, BUBEN&ZORWEG signature clock and the cutting edge technology of the TIME MOVER®.



10:18:57:03

ONCE UPON A TIME - THAT IS HOW  
FAIRY TALES BEGIN. DREAMS  
COME TRUE IN TIME - RIGHT NOW.







# MIRAGE

Light playing across elegant surfaces. Matte sheens and clearly accentuated elements creating a unique design. An interaction of stark lines, highly polished surfaces and living structures with elegant timbers ... the MIRAGE is a fitting centrepiece for a high class interior.

The clever LED lighting system bathes the unit in light, changing the front mirror panel into a transparent window, revealing the interior. A fascinating experience that will meet the needs and wants of even the most demanding collector. TIME MOVER® is the source of eternal youth for valuable wrist watches, with a German-made safe for the most valuable pieces, an optional HiFi system with Bluetooth connectivity ... for the collector who wants to gently drown out the quiet ticking of the FINE TIMEPIECE and the other clocks.





#### MIRAGE - FACTS

- 22 TIME MOVER® (8 of them in the safe)
- BUBEN&ZORWEG Safe SI -80
- BUBEN&ZORWEG signature clock with a stainless steel bezel
- Storage drawer (Gentleman Insert)
- Interior in finest velour
- Viewing window made of two-way mirror spy glass
- State-of-the-art LED lighting technology with fading function
- Integrated thermometer and hygrometer displays
- Swiss security lock
- Height-adjustable stainless steel feet on a pedestal
- Optional BUBEN&ZORWEG HiFi system Monolog 10 with music streaming and Bluetooth
- Optionally available with BUBEN&ZORWEG Alarm System
- Optionally available with BUBEN&ZORWEG Tracking System
- Finest German craftsmanship
- For technical details see page 144/145

#### TECHNICAL DATA

- 1530 x 560 x 511 mm
- Mains operation

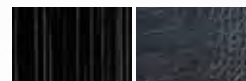


#### VERSIONS (HIGH GLOSS)

##### MACASSAR CROCO



##### EBONY GRIGIO CROCO



##### MONACO CROCO



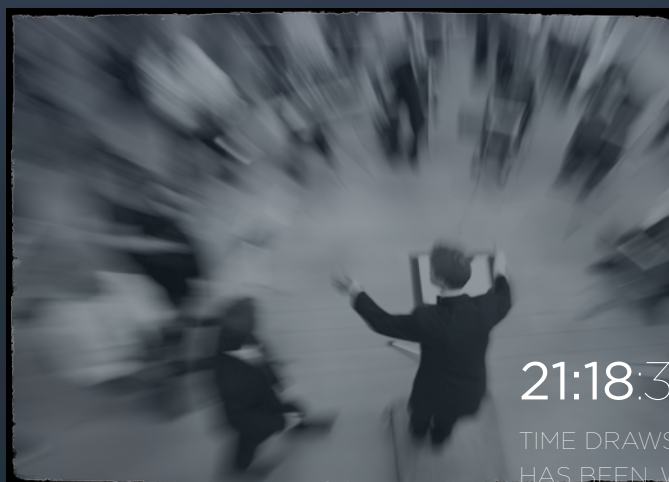






# GRANDE PRÉCISION

The love of passionate lovers of fine timepieces: watching time go by. To enjoy precision mechanics, seeing time converted into visual movement in the swinging of a pendulum, the precise ticking of the hands: watching the work of components tracking time as closely as possible. To anyone who shares this fascination with time, the GRANDE PRÉCISION by BUBEN&ZORWEG represents pure enjoyment.



21:18:34:12

TIME DRAWS STRAIGHT LINES: WHAT HAS BEEN, WHAT IS NOW, WHAT IS TO COME. EVERYTHING RUNS THROUGH THIS POINT: HERE. NOW.

# GRANDE PRÉCISION

A true eye-catcher: the central element of the GRANDE PRÉCISION is the Alpha 01 Pendulum World Time, made in our own manufactory in Germany – an imposing pendulum clock with a 31 day power reserve and high precision movement. The perfect craftsmanship is of the same quality. Precious wood, fine velour, polished stainless steel and non-reflective special glass combine to form a masterpiece of fine German craftsmanship.

The design is typical of BUBEN&ZORWEG: classic, elegant and with a passion for innovation and consistency of style. The GRANDE PRÉCISION is available in two versions: CONNOISSEUR with a acclimatised humidor and bar module and COLLECTOR with 48 TIME MOVER® and plenty of room for a large collection.





## GRANDE PRÉCISION FACTS

- 48 TIME MOVER® or 32 TIME MOVER® and a humidor with a German electronic humidifying system and a bar
- Additional storage for watches and jewellery in 8 drawers
- 2 pull-out tableau shelves
- Metal framed viewing windows on the side
- Hand-polished stainless steel inlay
- Interior in finest black velour
- State-of-the-art LED lighting technology with fading function
- Amiran® non-reflecting glass
- German security lock
- Optionally available with BUBEN&ZORWEG Alarm System
- Optionally available with BUBEN&ZORWEG Tracking System
- Finest German craftsmanship
- For technical details see page 144/145

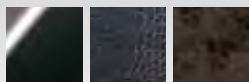
## TECHNICAL DATA

- 2025 x 869 x 375 mm
- 180 kg
- Mains operation

## VERSIONS

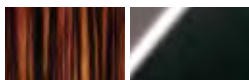
### CROCO

Hand-crafted housing, high-gloss lacquer finish, black with exquisite croco-look leather panelling, interior in poplar burl wood and finest velour, black



### MACASSAR

Hand-crafted housing, black semi-gloss, with selected macassar panelling, interior in macassar and finest velour, black



## FINE TIMEPIECE

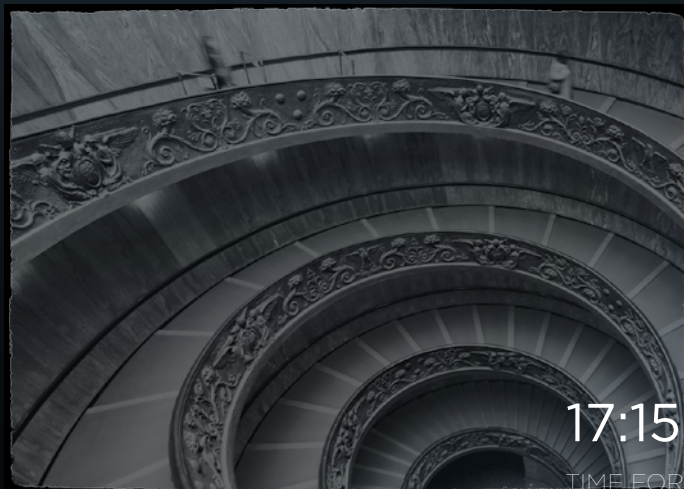
- BUBEN&ZORWEG Alpha 01 Pendulum Clock
- BUBEN&ZORWEG Manufacture movement Calibre "Alpha 01 - Pendulum World Time"
- Dead-beat Graham escapement with pallets made of hardened steel
- Seconds pendulum
- Second indication
- Main wheel with constant power and remontoire
- World time indication
- Weight drive (3,000 g) with a ball-bearing deflection roller
- 31 day power reserve
- Fine-polished, gold-plated wheels
- 6 high precision ball bearings and 6 rubies
- Polished pinions made of hardened steel
- Precision-milled and rhodanised plates made of hard brass with 5 columns
- Carbon fibre pendulum rod with extremely low heat expansion coefficient
- Pendulum bob with fine regulating system
- Rhodanised dial with sunray Brush
- 500 hours BUBEN&ZORWEG „Excellence Control"



# OBJET DE TEMPS II

"I have the simplest tastes," Oscar Wilde once said. "I am always satisfied with the best."

BUBEN&ZORWEG has the same outlook on design. Quality without compromise. Pushing the borders of feasibility, from shaping to master craftsmanship through to perfection of the smallest details. This is how we create masterpieces such as the OBJET DE TEMPS II.



17:15:57:02

TIME FOR LINES. CYCLES OF TIME ...  
WHEN SOMETHING RETURNS,  
IT IS NEVER WHAT IT ONCE WAS.







# OBJET DE TEMPS II

It is impressive how the OBJETS DE TEMPS II draws attention to time... precision-engineered and refined through innovative complications like a World Time Tourbillon or Orbit Tourbillon. Observing the sophisticated mechanics of such horological preciosities is nothing short of pure joy. The inner life of the OBJET DE TEMPS II is as innovative as its design is classic: from its LED lighting technology to its Swiss security lock.

Passionate watch collectors will appreciate the 10 TIME MOVER® elements that keep automatic watches reliably wound and beautifully displayed. An acclimatised humidor keeps cigars at their best. Those who choose the MOZART version can indulge in their favourite music as they contemplate the various aspects of their masterpiece of German craftsmanship.

## OBJET DE TEMPS II - FACTS

- 10 TIME MOVER®
- Drawer with mother-of-pearl inlay
- Two-way mirror spy glass viewing window (transparent when interior lighting is switched on)
- Solid galaxy granite base
- Humidor with a German electronic humidifying system
- BUBEN&ZORWEG Traveller travel watch case
- State-of-the-art LED lighting technology with fading function
- Swiss security lock
- Optionally available with BUBEN&ZORWEG Alarm System
- Optionally available with BUBEN&ZORWEG Tracking System
- Finest German craftsmanship
- For technical details see page 144/145

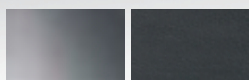
## TECHNICAL DATA

- 1782 x 480 x 480 mm
- 140 kg
- Mains Operation

## VERSIONS

### METALLIC

Hand-crafted German housing with polished stainless steel, high-gloss macassar inlay, interior in finest leather, black



### GOLD

Hand-crafted German housing, polished, 24 carat gold-plated stainless steel, high-gloss macassar inlay, interior in finest leather, black



OBJET DE TEMPS II -  
MOZART  
**LIMITED EDITION 75 PCS.**

- Solid galaxy granite base with a specially developed rotating mechanism
- Remote control for rotating base and LED lighting

FINE TIMEPIECE

- BUBEN&ZORWEG World Time Tourbillon
- Double-sided BUBEN&ZORWEG fine timepiece with indication of date, moon phase (mother of pearl), and large world time display at the rear

MECHANICAL CHIMES

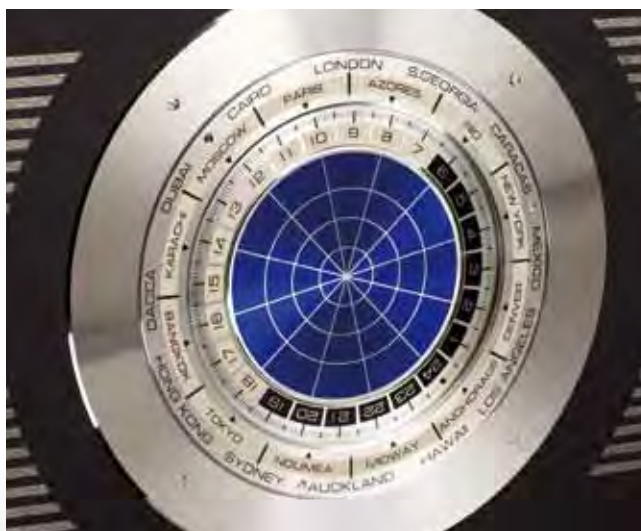
- Exclusive Reuge musical mechanism with 144 tones and 3 melodies: A Little Serenade, The Magic Flute, Turkish March.

TECHNICAL DATA

- 1782 x 480 x 480 mm
- 140 kg
- Mains operation



Solid galaxy granite base with a specially developed rotating mechanism



FINE TIMEPIECE  
OBJET DE TEMPS II  
WORLD TIME TOURBILLON  
**LIMITED EDITION 75 PCS.**

- Flying minute tourbillon with incorporated BUBEN&ZORWEG initials
- Swiss escapement with screw balance wheel and 11 jewel bearings
- 15 day German precision movement with constant power
- Indication of world time, date and power reserve
- Exquisite, ruthenium-coated dial with sunray-brush, goldstone bezel and glass chapter ring
- 500 hours BUBEN&ZORWEG "Excellence Control"



FINE TIMEPIECE  
OBJET DE TEMPS II  
ORBIT TOURBILLON  
**LIMITED EDITION 75 PCS.**

- Unique BUBEN&ZORWEG ORBIT TOURBILLON, a rotating flying minute tourbillon on the minute hand
- Swiss escapement with screw balance wheel and 11 jewel bearings
- 15 day German precision movement with constant power
- Power reserve display
- Gold-plated cogs, aluminium hand with counterweight
- Exquisite, ruthenium-coated dial with sunray-brush and glass chapter ring
- 500 hours BUBEN&ZORWEG "Excellence Control"







# XTREME

There can be only one. Unmistakable dynamics. The entrancing force of its powerful design. Organic, as if the XTREME had grown. The fascinatingly smooth gliding as it - remotely controlled - opens to reveal its interior cast in the light of effectively positioned LEDs.

This magnificent and innovative masterpiece of German craftsmanship was created in a world that consistently strives for perfection without compromise. The XTREME is the ideal creation for a world that appreciates and enjoys the unique.



16:18:52:99

TIME IS MOVEMENT. FLOWING.  
DYNAMIC. AN INVITATION TO BE.  
WITHOUT END.

# XTREME



Created in the tradition of the world's best

luxury sports cars, the XTREME is, so to speak, the twelve-cylinder model from the House of BUBEN&ZORWEG. The free-form object is reminiscent of the Monocoque cockpit of a racing car and the first glimpse of its interior conveys the flair of high-tech taken to the extreme. Clad in the finest leather with carbon inlays, it is craftsmanship in perfection, a veritable masterpiece that commands the room like a work of art. A powerful statement of innovative design.

The FINE TIMEPIECE with its flying minute tourbillon is a fascinating eye-catcher for every watch aficionado. Collectors of valuable automatic watches will discover 28 TIME MOVER® elements, 12 of which are housed in the integrated safe (VdS I certified). One of the drawers contains a humidor with an electronic climate control system; a HiFi system delivers a rich and full-bodied sound. Anyone wishing to own a fully customised XTREME can rest assured: we look forward to creative discussions.



## XTREME - FACTS

- TIME MOVER® for 28 watches (12 of them in the safe)
- Integrated BUBEN&ZORWEG safe, safety standard **VDS I**
- Free-form chassis with a highgloss varnish finish
- Unique, automatic "magic slide" opening and closing system
- Luxurious interior in fine Italian nappa leather and carbon inlay work
- 1 drawer for storing watches and jewellery
- 1 drawer with integrated humidifier with a German electronic humidifying system
- Optional BUBEN&ZORWEG HiFi system Monolog 10 with music streaming and Bluetooth
- Remote control for lighting and the "magic slide" opening and closing system
- Latest LED light technology with fading function
- Swiss safety lock
- Various special chassis colours available as optional extras
- Optionally available with BUBEN&ZORWEG Alarm System
- Optionally available with BUBEN&ZORWEG Tracking System
- Finest German craftsmanship
- For technical details see page 144/145



## FINE TIMEPIECE

- Flying minute tourbillon with engraved BUBEN&ZORWEG initials
- Swiss escapement with screw balance wheel and 11 rubies
- 15 day precision movement of German manufacture with constant force and maintaining power
- Display for date and power reserve
- Exquisite, ruthenium-coated dial
- 500 hours of "Excellence Control"

## TECHNICAL DATA

- 1820 x 845 x 470 mm
- 310 kg
- Mains Operation





# DESIGN DRIVING INNOVATION

„You never get a second chance to make a first impression“, as the saying goes. That neatly sums up the purpose of design. But it doesn't tell us what it is that characterises good design. Cheap showmanship is nothing special – but when a design remains fascinating despite many interactions with the object, when the gaze doesn't become dull, when the design fits seamlessly into the object owner's life... that is when a design is a success.

We at BUBEN&ZORWEG set great store by the design of our masterpieces. The language of shape reveals much about the promise the function and features of an object must keep, long before a word is spoken. That is why we spend many an hour with our designers at the drawing board, developing studies and building 1:1 models. Many of them are discarded before the design is finalised. Until everyone involved in the design process can say with their heads, hearts and guts: That's it!

It is a long path we have to walk to arrive at such masterpieces of design. It is all in the interest of the unmistakable. We owe it to the world we live in.





14:08:23:09

ÖLBRONN-DÜRRN. GERMANY

One of many good ideas remains. The best one.  
It's now all about implementation. About  
focusing on perfection.



# 09:19:03:78

## PHANTOM

Form and function combine successfully where perfection itself takes shape – the deep satisfaction of owning and enjoying a true masterpiece.









# TIME MOVER®

Time is a permanent, ever flowing movement. Nature, on the other hand, flows in cyclic phases: Day and night. Sprouting, growing, blossoming, ripening. For humans, a key cycle of life is that of activity and rest. The fine, sensitive mechanisms of valuable automatic watches have the same requirements. Movement and relaxation. The TIME MOVER® watch winder perfectly controls such rhythms to extend your watch's life.



14:20:19:67

MOVEMENT AS AN EXPRESSION OF TIME.  
LIFE IS THE OPPOSITE OF TORPID STILLNESS:  
LIFE IS MOVEMENT. MOVEMENT THROUGH TIME.

TIME MOVER HANDWOUND®  
PAGE **64**

REVOLUTION  
PAGE **66**

PHANTOM  
PAGE **68**

SPIRIT  
PAGE **70**

VANTAGE  
PAGE **72**

SAFE MASTER  
PAGE **74**

QUANTUM  
PAGE **76**

COLLECTOR  
PAGE **78**

COLLECTOR 32 DELUXE  
PAGE **79**

EVOLUTION  
PAGE **80**

COSMOPOLITAN  
PAGE **81**



# TIME MOVER®

## A MUST-HAVE FOR EVERY LOVER OF FINE TIMEPIECES

**A**t the beginning of the story of the House of BUBEN&ZORWEG stood an innovative solution to a problem, a solution that represented a milestone to the vast majority of passionate collectors of valuable automatic wristwatches: the presentation of the first TIME MOVER® in 1998. Developed and implemented in cooperation with partner company ELMA, the design of the watch winder system was so convincing that the demand for the accessory aimed at the passionate collector grew exponentially. Within just a short time BUBEN&ZORWEG had attained the position of world leader in the watch winder segment – and the TIME MOVER® had become a milestone for the company itself.

BUBEN&ZORWEG employs not only innovative engineers and designers with an eye for style but also masters of perfect craftsmanship – ideal prerequisites for turning the TIME MOVER®

into more than “just” a piece of fascinating technology. Something akin to an exclusive universe of passion for all things beautiful and valuable began to evolve around the TIME MOVER®: objects small and large with ideal storage and presentation conditions for valuable watches and other items of particular significance to the lives of their respective owners. This catalog conveys an image of the wonderful world that has evolved around the TIME MOVER®.

The developers of the TIME MOVER® have, of course, never spent a second resting on their laurels. The strive for perfection has produced sophisticated electronic control systems and optimized operating controls that have enabled the TIME MOVER® to evolve into a reference object that commands the cutting edge of the market and serves as a benchmark for all who seek measurement in this segment.

### OUR RESPONSE TO NEW CHALLENGES: INNOVATION

The new watch holder is the latest example of permanent TIME MOVER® innovation. Watch cases have increased steadily in size over the past years. It was therefore a matter of course to adapt the TIME MOVER® watch holders to this development.

They now accommodate automatic watches with a case diameter of up to 60 mm. Even prominent crowns are not a problem. Watches with straps for narrow wrists are also catered for. A simple adjustment of the watch holder is all that is needed. A small but significant detail: the safety catch mechanism clicks audibly when you insert your watch into the TIME MOVER® module to let you know that your watch is in safe hands. Removing a watch is now also easier. Each watch is now simply pulled out with a natural movement instead of having to first compress two lugs.

These innovative improvements to the TIME MOVER® modules are rounded off by a now virtually noiseless operation thanks to special ball bearings and the use of new materials. A recent stress test produced sensational results: namely an operating period of 400,000 hours – that's around 45 years!



## THERE ARE THREE GOOD REASONS WHY LOVERS OF VALUABLE AUTOMATIC WATCHES SIMPLY CANNOT DO WITHOUT A TIME MOVER®:

### NECESSITY

Automatic watches have, on average, a power reserve of approximately 36 hours before the movement stops. As with all high performance mechanisms, motion is the 'natural' state of a movement. Standstill can cause, among other problems, lubricants to solidify, which in turn results in a loss of precision and a need for laborious repair work. It is therefore good practice to store automatic watches not being worn in a watch winder to keep them running in a watch winder such as the TIME MOVER® from BUBEN&ZORWEG represents in perfection.

### CONVENIENCE

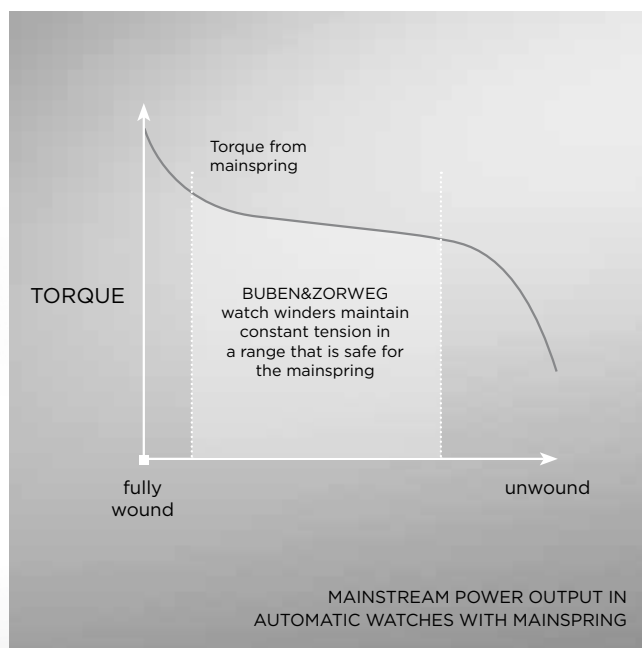
The TIME MOVER® provides the correct momentum even for large collections of precious automatic watches. The running maintenance for time, date, moon phase, time zones and perpetual calendars is assumed by the TIME MOVER®, preventing you from having to recalibrate after every standstill. Experience the comfort of knowing that each watch in your collection is accurately set and ready to be worn

### PRESENTATION

Double the pleasure of owning valuable watches by presenting them in a befitting environment. BUBEN&ZORWEG offer a wide range of TIME MOVER® units, from small two-piece sets to large, modular, multi-functional OBJECTS OF TIME® for the passionate lover of fine timepieces. Their common denominators are optimal protection and a sumptuous ambience created by master craftsmen for the presentation of your valuable collection.

### TIME MOVER® BASICS OF OPERATION

The movement and therefore winding of the watches is managed in hourly cycles: short winding phases, each with 8 rotations per minute, alternate with longer resting phases. The selected, pre-set number of rotations per day exactly matches the timepiece's required winding and resting phases.



# TIME MOVER® AUTOMATIC

## OUR PROMISE: UNCOMPROMISING DOWN TO THE FINEST DETAIL

### PERFECTION AND INNOVATION: 5-YEAR WARRANTY

**W**atch winders belong to the core competence of BUBEN&ZORWEG: from 1998 onwards we, together with our partnercompany Elma, have continually upgraded the TIME MOVER®. Our commitment to innovation and perfection has made the TIME MOVER® technology the benchmark among watch winders, placing BUBEN&ZORWEG at the top of the world-wide watch winding market. Lovers of fine timepieces in over 100 countries entrust their valuable automatic watches to the care of TIME MOVER® technology.

The TIME MOVER® winds watches as gently as possible, taxing them far less than daily wear on the wrist with its exposure to bumps, moisture, etc. Watches that have been wound over long periods of time in regular watch winders sometimes fall prey to a state in which the mainspring works predominantly in the slipping clutch area, never allowing the tension on the mechanism to ease. To prevent this unnecessary strain on the winding mechanism, the TIME MOVER® has a specially developed sleep-

phase which allows the tension on the mainspring to ease. In this way unnecessary stress on both slipping clutch and mainspring is avoided. In addition, the drive torque is kept constant, thus increasing accuracy. Integrated software ensures adherence to the chosen rotational frequency. This guarantees a constant number of rotations even during current fluctuations.

Run-time tests are continuously carried out at our test laboratories. As a result, the TIME MOVER® is the most reliable and long-lasting watch winder on the market.

The entire TIME MOVER® technology was tested with a 250 gram weight per watch holder over 15 years of cyclical operation. The current consumption and noise emission are kept within strict tolerances for each module.

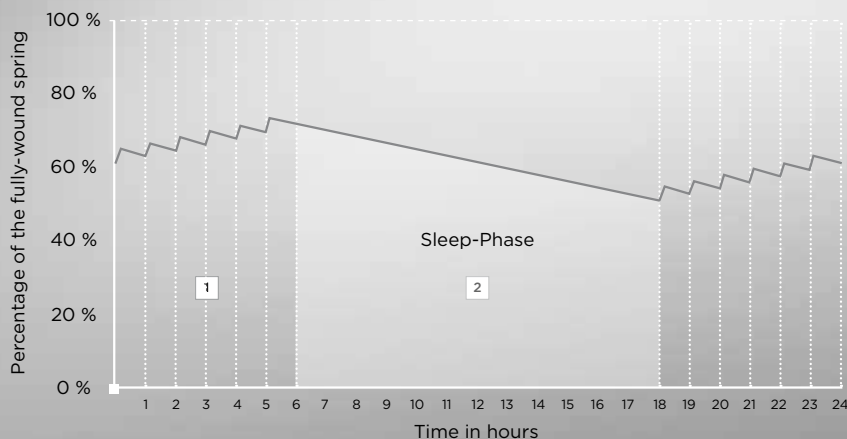
The outstanding features of the TIME MOVER® are the result of uncompromising choice of the best components that can be found on the market. Specially developed motors are the heart of the TIME MOVER®. The impact sound of these already quiet motors was then tuned during countless development hours to the

#### 1 Phase 1:

The watch is wound in an hourly cycle: a short winding phase is followed by a longer rest phase, depending on the required number of rotations.

#### 2 Phase 2:

Setting the TIME MOVER® Sleep Phase allows the watch to wind down continuously for a maximum of 12 hours. This leads to an additional release of tension from the winding spring.



EXAMPLE OF WINDING A WATCH WITH 48 HOURS OF  
POWER RESERVE AT 900 REVOLUTIONS PER DAY



individual frequency of the conductor board to ensure no resonance is created. The use of a motor with a metal drive increased the service life of the battery to between 12 and 18 months.

Also significant for passionate collectors is the watch winder's magnetic shielding. Electronic motors create magnetic fields, which in certain circumstances can have a negative effect on the accuracy of mechanical watches, as the hairspring can take on an electromagnetic charge. This element of uncertainty has been completely removed in BUBEN&ZORWEG watch winders. Ground-breaking development work reduced the radiation emitted by the motor to a value (approx. 80 A/m) that practically no longer registers on instruments, and is only double that of the Earth's magnetic field. An extra tidbit: the radiation value limit for this type of item as defined by the German DIN standard is 4,800 A/m.

To enjoy the benefits of the 5-year warranty on TIME MOVER® technology, please register online for membership of the BUBEN&ZORWEG Club.

#### TIME MOVER® AUTOMATIC HIGHLIGHTS

- Specially developed motor
- 5 year warranty
- Magnetically shielded
- Extremely quiet operation
- Long battery service life (12 to 18 months)
- Intelligent software with sleep-phase
- Adjustable number of rotations and rotational direction
- Guaranteed number of rotations
- Watch holder for small and extra-large watches
- Made in Germany



## FUNCTION OVERVIEW

The central element of the latest TIME MOVER® generation is the clearly structured, easy-to-use control panel, intuitively operated via cursor. One control panel can individually 'manage' up to six TIME MOVER® modules (1, 2, or 4 unit modules). The driving idea behind BUBEN&ZORWEG's TIME MOVER® is to perfectly simulate the natural wearing behaviour. There is more to it, however – each TIME MOVER® parameter can be configured to match a watch's individual requirements with more accuracy than if the watch is worn on a wrist throughout a normal day.



- A** The Display Navigation takes place by selecting cursor keys in the operating field.
- B** The Speedwinding Mode quickly provides run-down watches with sufficient power reserves. The running time is pre-set at 60 min. and you can freely choose the rotational direction.
- C** The Sleep Mode leaves the watch unwound for a freely programmable recovery period of up to 16 hours. This simulates the day-to-day watch wearing for which the clockwork was designed: the sleep mode allows the tension on the mainspring to ease.
- D** The Auto Mode is pre-set on delivery and suitable for almost all watches - optimal for lovers of fine timepieces who have no interest in delving into in-depth technical details. The Auto Mode has a clockwise - counter-clockwise winding mechanism with 900 rotations/day (=450 rotations/day per rotational direction).
- E** In the individually adjustable Select Mode, the settings of up to six modules can be individually chosen via a compact control module. In this way, different watches with particular requirements can be moved simultaneously yet individually in the same TIME MOVER®.
- F** The Setup allows you to set the display language to English, French, or German; you can also choose a demo mode.
- G** For optimal winding of your watches, you can choose a Frequency between 650 and 1800 rotations per day.
- H** You can choose between three Rotational Directions: clockwise, counter-clockwise, and alternating.
- I** The quartz-controlled Reference clock has an independent power supply.
- J** The service life of the battery during battery operation is 12 to 18 months.

The watch holder presents the watches during the resting period in the optimal "12 Hour" Position. The watches are easy to insert; the watchband is automatically tightened (suitable for all sizes).

# TIME MOVER® HANDWOUND

## THE INNOVATIVE SOLUTION FOR PASSIONATE COLLECTORS OF EXCLUSIVE HANDWOUND WATCHES

**T**he development of the TIME MOVER® HANDWOUND is for many passionate collectors of exquisite wristwatches with a hand-wound caliber nothing less than a quantum leap. In general, the same rule applies to both automatic and hand-wound watch movements: extended standstill brings with it the hazard of lubricant solidification and resinification. If the precious item boasts fascinating complications such as a moon phase display or a perpetual calendar, it can become extremely difficult to get its movement working and properly adjusted after a standstill.

BUBEN&ZORWEG has even created a masterpiece in the field of hand-wound watches in the form of the ONE with the impressive complication of a perpetual calendar. This development and the ever more urgent market demand finally tipped the scales in favour of tackling the many obstacles lining the path to developing the perfect TIME MOVER® for hand-wound watches. Anything less than perfect was out of the question. The legendary innovations that have made BUBEN&ZORWEG and its TIME MOVER® technology the uncontested market leader for collectors of automatic watches were but of limited use in this quest. The TIME MOVER® HANDWOUND is basically a systematic new development characterized by the passion of the House of BUBEN&ZORWEG for innovative solutions.

### TIME MOVER® HANDWOUND HIGHLIGHTS

- Highest operational safety
- Automatic deactivation when the watch is fully wound
- Intelligent control system keeps the winding spring within an ideal tension range
- Easy to operate
- Universally suitable for virtually any hand-wound watch
- Customisable settings for power reserve and speed winding
- Mains and battery operation
- Made in Germany



### BETTER THAN FINGERTIPS: SENSITIVE WINDING CONTROL

As the name implies, classic watch winders are intended to keep the movements of automatic watches perfectly on the go by moving the watches in precision-controlled cycles. The winding crown on hand-wound watches, on the other hand, requires sensitive handling and control – a task that is both mechanically and electronically entirely different to the “inside life” of a conventional TIME MOVER®.

Hand-wound watches do not have a safety clutch. The force required to wind the watch increases consistently until the spring is fully tensioned. The TIME MOVER® HANDWOUND monitors these changes in winding force with precise, electronically controlled sensitivity to ensure the winding process can be stopped within milliseconds at the ideal stage when the spring is fully wound. The safety clutch has therefore been relocated externally to the watch winder’s control system, so to speak; this reliably prevents any over-tensioning of the spring.

### TWO OPERATING MODES: “COLLECTOR’S” MODE AND “SPEED WINDING” MODE

#### “COLLECTOR’S” MODE

The “Collector’s” Mode applies a sophisticated algorithm to keep the watch within the spring’s ideal range over the required period of time. The spring torque is kept constant and the watch at its most accurate.

#### “SPEED WINDING” MODE

The second winding mode of the TIME MOVER® HANDWOUND is the Speed Winding mode. Speed winding winds the watch once to full spring tension with outstanding precision. The watch can then be removed from the winder and worn with confidence.

## INNOVATION THROUGH SCIENCE - BIONICS

The hand on the cradle of the TIME MOVER® HANDWOUND was that of the young science of Bionics – the lessons we can learn from Nature's optimum solutions. Take, for instance, the innovative and bionically perfect equivalent of the human fingertips inside the TIME MOVER® HANDWOUND: the gentle softness of select rubber rollers that carefully grip the crown... the delicate sensitivity of the sensors that control the winding of the watch. And their adaptability: this revolutionary new technology from the House of BUBEN&ZORWEG is suitable for keeping 95% of hand-wound watches on the market running perfectly.

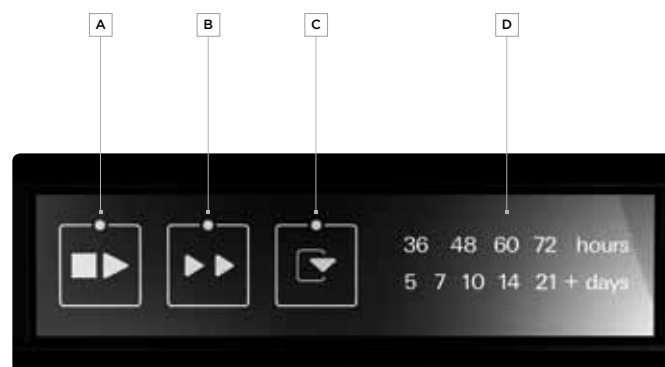
## PERFECT INTEGRATION IN AN EXCLUSIVE AMBIENCE

The TIME MOVER® HANDWOUND is available in various styles of housing – all with the fascinating designs and luxurious materials common to all BUBEN&ZORWEG masterpieces of craftsmanship. The TIME MOVER® HANDWOUND is operable inside its housing and may also be taken out and placed in a safe with a mounted watch. TIME MOVER® HANDWOUND units are of course integrable in other masterpieces from the House of BUBEN&ZORWEG, for instance in our OBJECTS OF TIME®, our SAFES or our exquisite Interior for the FINE ART OF COLLECTING.

It is also easier to mount the watch if the TIME MOVER® HANDWOUND is first removed from the housing. The unit is suitable for mounting watches with diameters between 25 and 55 mm; the possible strap length ranges between 150 and 220 mm. There is an attachment for long straps that is fitted to the upper wing of the watch holder.

The TIME MOVER® HANDWOUND inside the housing is powered via the mains supply. On removal from the housing the power supply is taken over by an integrated battery. A sophisticated energy-saving mode guarantees a runtime of up to one year in battery mode.

BUBEN&ZORWEG has achieved another innovative development in the form of the TIME MOVER® HANDWOUND that has been welcomed with interest and gratitude into the world of passionate collectors of precious watches: here, at last, is a solution beyond all reproach that provides the necessary value-conserving care.



### A Collector's Mode:

This button starts and stops the Collector's Mode. The mainspring of your watch is maintained within the ideal operating range in accordance with the selected power reserve.

### C Power reserve selection:

Use this button to adjust the power reserve for the Collector's Mode. Pressing the button toggles the selected power reserve which then appears on the right-hand side of the display.

### B Speed Winding:

This button starts and stops the speed winding mode which is used to wind the watch to the full spring tension.

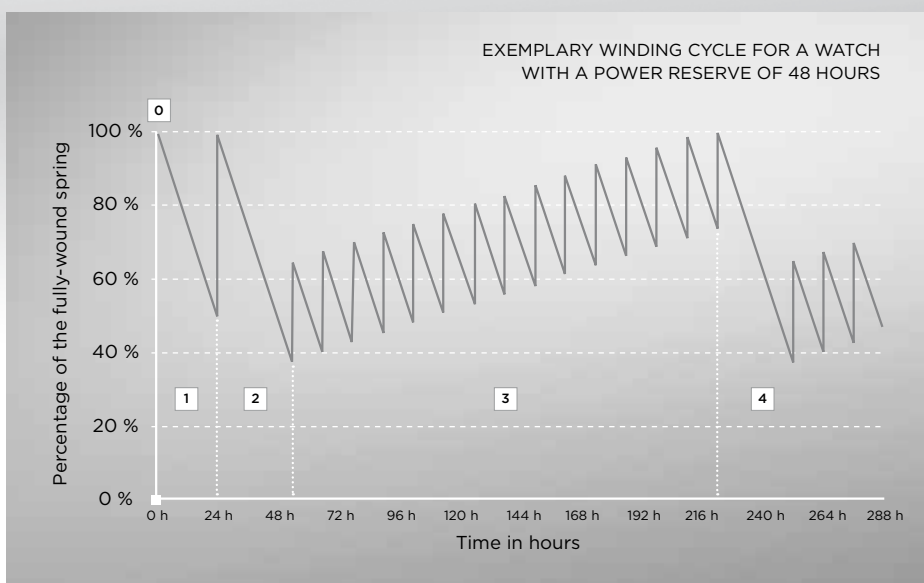
### D Power reserve display:

You can see here which power reserve you selected using the "Power reserve selection" button.

Teach-in process

Stopping cycle

- 0 The device cannot detect the wound state of the watch at the time it is fitted. The watch is therefore initially wound in full.
- 1 The watch runs down for a specified period of time.
- 2 The watch is fully wound once again. This time the device measures how long this process takes. The software uses the measurement data and the power reserve you have set to determine an individual winding cycle.
- 3 The watch is now wound a little every 12 hours. The device winds the watch a little more than absolutely necessary to ensure it never fully runs down.
- 4 The watch is now fully wound after a time period defined in dependence on the power reserve. The permanent cycle will then keep on starting over again.







## TIME MOVER® HANDWOUND - FACTS

- Hand-made case, black satin finish, with exclusive inlay in crocodile leather and a viewing window
- Highest operational safety
- Automatic deactivation when the watch is fully wound
- Intelligent control system keeps the winding spring within an ideal tension range
- Easy to operate
- Universally suitable for virtually any hand-wound watch
- Customisable settings for power reserve and speed winding
- Mains and battery operation
- Made in Germany

## TECHNICAL DATA

- 180 x 277 x 229 mm
- Mains Operation
- Battery Operation



Extensive and comprehensive knowledge of how to handle precious watches has enabled BUBEN&ZORWEG to find the perfect solution to a critical characteristic of hand-wound watches: the winding process is a sensitive balancing act as they do not have a safety clutch. The TIME MOVER® HANDWOUND incorporates highly sensitive electronics with sensors that monitor the winding process – ideal for spring maintenance.

## VERSIONS

### CROCO



### EBONY GRIGIO



# TIME MOVER® HANDWOUND

Can there be anything more sensitive than the hand of a passionate collector who treats his valuable collection with loving care? In fact, there is – the TIME MOVER® HANDWOUND from BUBEN&ZORWEG. The innovative company conquered the market for automatic watch winder with the TIME MOVER® and has successfully defended its leading position ever since.

The TIME MOVER® HANDWOUND from BUBEN&ZORWEG is based on a competent foundation of many years' experience with the sensitive inner workings of valuable watches and movements and represents another milestone offering the owners of hand-wound watches new perspectives.

The TIME MOVER® HANDWOUND has – no surprise for a product from BUBEN&ZORWEG – another outstanding feature alongside its fantastic functionality, namely the strikingly elegant design of this masterpiece: the TIME MOVER® HANDWOUND is available in Croco or Ebony Grigio as a table-top device; as a module, the precision instrument is also the perfect addition to the OBJECTS OF TIME® range. The TIME MOVER® HANDWOUND is, of course, an integral part of the ONE scope of delivery.







# REVOLUTION

Design is often most convincing when it represents the revolutionary execution of a radical concept. The REVOLUTION from the House of BUBEN&ZORWEG demonstrates precisely this passion for innovation. An example: the idea that maximal transparency can be combined with optimal security: the German-made safety lock protects the valuable watches on the TIME MOVER® watch winders from unauthorised access while they are still on display under a hood of crystal-clear security glass. The optional BUBEN&ZORWEG signature clock is integrated into the refined LED lighting system.

## REVOLUTION - FACTS

- TIME MOVER® for 8 or 12 watches or 8 TIME MOVER® with BUBEN&ZORWEG signature clock with a stainless steel bezel
- BUBEN&ZORWEG "soft-close" mechanism
- German security lock
- Aluminium chassis
- High-gloss, polished piano lacquer with precious wood or carbon inlay work
- interior in finest Italian nappa leather
- State-of-the-art LED lighting technology with fading function
- Available with an optional presentation column
- Finest German craftsmanship
- For technical details see page 144/145

## TECHNICAL DATA

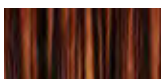
- Revolution 8:  
260 x 490 x 325 mm
- Revolution V8:  
260 x 690 x 325 mm
- Revolution 12:  
260 x 690 x 325 mm
- 25 kg
- Mains operation

## REVOLUTION HIGH FIDELITY

- BUBEN&ZORWEG HiFi system Monolog 10 with music streaming and Bluetooth integrated in the presentations column
- For technical details see page 144/145

## VERSIONS

### MACASSAR



### CARBON



### CROCO





# PHANTOM

## PHANTOM – FACTS

- TIME MOVER® for 4 or 8 watches
- Fully mechanical “Push and Slide” opening system
- German security lock
- 5 mm thick aluminium chassis with a high-gloss finish
- Solid base made of aluminium
- State-of-the-art LED lighting technology with fading function
- High-gloss metallic piano lacquer with inlay work in macassar or carbon, interior in finest Italian nappa leather
- Available with an optional presentation column
- Finest German craftsmanship

## TECHNICAL DATA

- Phantom 4: 280 x 275/437 (closed/open) x 242 mm
- Phantom 8: 280 x 425/738 (closed/open) x 242 mm
- Mains Operation

## WITH PRESENTATIONS COLUMN

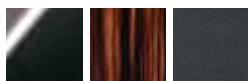
- Phantom 4: 1410 x 400/437 (closed/open) x 400 mm
- Phantom 8: 1410 x 425/738 (closed/open) x 400 mm

## PHANTOM HIGH FIDELITY

- BUBEN&ZORWEG HiFi system Monolog 10 with music streaming and Bluetooth integrated in the presentations column
- For technical details see page 144/145

## VERSIONS

### MACASSAR



### CARBON DIABLO



### CARBON



Futuristic designs built for eternity: this is the basis of the design of the PHANTOM by BUBEN&ZORWEG. Open the solid aluminium casing with the “push and slide” opening system and experience the silky-smooth sliding of fine mechanics and master craftsmanship at first hand. Materials, colours, shapes and functions are unified in a harmonic connection.

The optional presentations column positions the PHANTOM in the room like an object of art. The PHANTOM HIGH FIDELITY has an integrated HiFi system in the presentations column, making it not only an object of art but also a coveted sound system.







# SPIRIT

## SPIRIT – FACTS

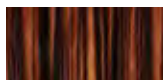
- TIME MOVER® for 4, 8 or 12 watches
- German security lock
- Aluminium chassis
- High-gloss, polished piano lacquer
- Hand-finished housing with inlay work in carbon or croco-look leather, interior in finest velour
- Hand polished stainless steel applications
- State-of-the-art LED lighting technology with fading function
- Finest German craftsmanship

## TECHNICAL DATA

- Spirit 4: 275 x 295 x 270 mm
- Spirit 8: 275 x 460 x 270 mm
- Spirit 12: 275 x 635 x 270 mm
- Mains Operation
- Battery Operation

## VERSIONS

### MACASSAR



### CARBON



### CROCO



To waste words praising the TIME MOVER® from the House of BUBEN&ZORWEG among passionate watch collectors would be to preach to the converted. Its uncontested position as market leader is proof enough of the outstanding functionality of these masterpieces.

The intrinsic values of the TIME MOVER® modules are subject to continuous improvement – much in keeping with the passionate commitment of BUBEN&ZORWEG to innovation and enthralling technology. BUBEN&ZORWEG is equally as committed to a progressive language of shape that lends an expressive design to their innovative technology. Progress combines with timelessness to create lasting values of aesthetic appeal.

This claim has found its realisation in the form of SPIRIT, a completely new combination of aluminium, steel, wood and glass. A special aluminium structure had to be designed to unite the streamlined dynamics of the housing with carefully selected materials and surfaces in a culmination of perfect craftsmanship. Fascination sets in at the first touch, continues with the appreciation of comprehensive functionality and ends... never. SPIRIT is available in croco or carbon with a flawless high-polish finish and offers the perfect ambience for four, eight or twelve watches. The LED lighting system brings out the best in the precious objects, whilst the lockable doors keep them safe from unauthorised access. No matter how you look at it, the SPIRIT is every inch another masterpiece from the House of BUBEN&ZORWEG.







## VANTAGE - FACTS

- TIME MOVER® for 2, 4, 8 or 12 watches, collection case for 10 or 18 watches
- Hand-finished housing with 10 layers of high-gloss lacquer and exclusive macassar or carbon inlay
- Interior in finest black velour
- Viewing window
- State-of-the-art LED lighting technology with fading function

## TECHNICAL DATA

- Vantage 2:  
187 x 244 x 228 mm
- Vantage 4:  
242 x 297 x 249 mm
- Vantage 8:  
241 x 457 x 249 mm
- Vantage 12:  
250 x 614 x 257 mm
- Mains Operation
- Battery Operation  
(Vantage 2, 4, und 8)
- Vantage 10:  
96 x 357 x 244 mm
- Vantage 18:  
100 x 385 x 325 mm
- Vantage Gentleman:  
93 x 357 x 244 mm

VANTAGE GENTLEMAN  
FACTS

- Collection case for 2 watches, writing utensils and jewellery
- Interior in finest velour



## VERSIONS

## MACASSAR



## CARBON



## VANTAGE

Those who appreciate clean functional designs will love the BUBEN&ZORWEG VANTAGE, a masterpiece of manual craftsmanship, which adheres to the “form follows function” principle with innovative, high-tech equipment and high-end, hand-selected materials. Whether the unit is given a carbon or macassar wood finish, the VANTAGE reveals its unique value at the very first glance or touch. Ten layers of high-gloss varnish that reflect light, black velour that accentuates the impressive presentation of the watches on the TIME MOVER®, all under a protective pane of crystal glass.





# SAFE MASTER

The SAFE MASTER allows passionate lovers of fine time-pieces to integrate the innovative TIME MOVER® technology by BUBEN&ZORWEG in their own individual environment. The TIME MOVER® units are surrounded by a solid, perfectly crafted wooden housing upholstered with sky leather.

The intelligent software regulates the TIME MOVER® movement cycles in the SAFE MASTER with the precision to be expected of a BUBEN&ZORWEG product. Wherever the SAFE MASTER is used, in a safe, a cupboard or anywhere else for that matter – it is and remains a masterpiece of craftsmanship.

## SAFE MASTER – FACTS

- TIME MOVER® for 2, 4 or 8 watches
- Hand-finished housing clad in sky leather, black

## TECHNICAL DATA

- Safe Master 2:  
169 x 236 x 212 mm
- Safe Master 4:  
229 x 224 x 209 mm
- Safe Master 8:  
254 x 456 x 244 mm
- Mains Operation
- Battery Operation







## QUANTUM – FACTS

- 16 TIME MOVER®
- Interior in finest velour
- State-of-the-art LED lighting technology with fading function
- Electronic locking system
- Viewing window made of safety glass
- Optionally available with two-way mirror spy glass
- Available with an optional presentation column
- Optionally available with BUBEN&ZORWEG Alarm System
- Optionally available with BUBEN&ZORWEG Tracking System
- Finest German craftsmanship
- For technical details see page 144/145

## TECHNICAL DATA

- 480 x 440 x 450 mm
- 32 kg
- Mains Operation

## WITH PRESENTATIONS COLUMN

- 1420 x 440 x 450 mm
- 50 kg

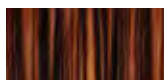


## QUANTUM HIFI – FACTS

- Hand-crafted housing made of selected macassar wood, high-gloss
- Wireless Mono High-End speaker system
- Automatic voltage detection 115-230 V
- Automatic sleep mode and output stage activation
- 4 power output stages with 400 W total
- 4-way speaker system
- Ceramic magnesium tweeter with neodymium magnet
- Kevlar neodymium midrange chassis
- 8 inch bass bass-reflex system
- 10 inch subwoofer bass-reflex system
- Frequency range: 25 – 25.000 Hz
- WLAN lossless
- Bluetooth 3.0 lossless
- Digitally processed audio signal
- Digital and active audio crossover
- Frequency response and phase correlation are optimised by a digital signal processor
- Optionally available with BUBEN&ZORWEG Alarm System
- Optionally available with BUBEN&ZORWEG Tracking System
- Finest German craftsmanship
- For technical details see page 144/145

## VERSION

MACASSAR HIGH-GLOSS



## QUANTUM



Maximum reduction is the order of the day for many enthusiasts of unusual design. QUANTUM meets this aesthetic criterion in perfection – the archaic elements of cube, column (optional) and disc combine in harmonic proportions to create an elegant system that discloses the depth of its nature only to the adept.

As a presentation module for aficionados of valuable wrist watches, the QUANTUM is equipped with 16 TIME MOVER® elements. Viewing windows in tinted safety glass or spy-glass and protected by an electronic locking system are available as optional extras. An alarm system and Tracking System are available on request.

QUANTUM HIFI is a high-end active loudspeaker with a 400 W power amplifier, a top-class electronic tone controller and a superior 4-way system. It features lossless wireless control via WLAN or Bluetooth.

Every QUANTUM is a masterpiece of German craftsmanship, perfectly manufactured from exquisite materials and an effective “statement by understatement” for the most demanding interiors thanks to integrated innovation.





# COLLECTOR

As a refined artefact the COLLECTOR represents an entrance point into the world of elite collectors. The watches on the TIME MOVER® modules behind the crystal glass doors are beautifully illuminated by LED lights that gently fade out for an impressive effect. The black velour interior draws the attention to the real “stars”, namely the watches themselves. Whereby the COLLECTOR itself has all the qualities of a star: perfect hand-crafted finishing in every detail; the silky gloss of the piano look with high-quality precious wood or carbon inlay offers a safe and befitting ambience for valuable watches – the security lock on the side protects from unauthorised access.

Three COLLECTOR versions are available: one version has 12 TIME MOVER® modules and two drawers for storing 10 additional watches; the second has 16 TIME MOVER® modules and additional storage space for 4 watches, whilst the third version has 24 TIME MOVER®.

## VERSIONS

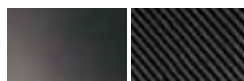
### MACASSAR

Hand-crafted housing with macassar inlay, semi-gloss, interior in finest velour, black



### CARBON

Hand-crafted housing with carbon inlay in top quality carbon fibre, high-gloss finish, interior in finest velour, black



## COLLECTOR – FACTS

- TIME MOVER® for 12, 16 or 24 watches
- Additional storage for 10 watches in 2 drawers (Collector 12)
- Additional storage for 4 watches (Collector 16)
- State-of-the-art LED lighting technology with fading function
- Swiss security lock
- Viewing window with specially designed opening mechanism
- Suitable for wall mounting
- Optional presentation table available
- Optionally available with BUBEN&ZORWEG Alarm System
- Optionally available with BUBEN&ZORWEG Tracking System
- Finest German craftsmanship
- For technical details see page 144/145

## TECHNICAL DATA

- 400 x 560 x 284 mm
- 32 kg
- Mains Operation

## WITH PRESENTATIONS COLUMN

- 1160 x 560 x 330 mm



# COLLECTOR 32 DELUXE

Sovereign understatement is the signature of the COLLECTOR 32 DELUXE from the House of BUBEN&ZORWEG. Four stainless steel portholes give an idea of the valuable content of this masterpiece. The clear strength of the lines communicates security. This security is delivered by a Swiss-made Kaba lock. A masterpiece of craftsmanship combined with fine, tropical or European timbers with polished steel inserts and the finest velour. The classic, conservative lines of the COLLECTOR 32 DELUXE that radiate high quality are optimally complemented by innovative technology in the form of 32 TIME MOVER® and an integrated LED lighting system.

## COLLECTOR 32 DELUXE FACTS

- 32 TIME MOVER®
- 4 storage drawers (Gentleman insert, watch insert and universal insert)
- 4 stainless steel portholes
- Hand-crafted housing with precious wood inlay, interior in finest velour
- Integrated thermometer and hygrometer displays
- State-of-the-art LED lighting technology with fading function
- Swiss security lock
- Height-adjustable stainless steel feet
- Optionally available with BUBEN&ZORWEG Alarm System
- Optionally available with BUBEN&ZORWEG Tracking System
- Finest German craftsmanship
- For technical details see page 144/145

## TECHNICAL DATA

- 1820 x 475 x 455 mm
- 130 kg
- Mains Operation

## VERSION

### MACASSAR SEMI GLOSS





# EVOLUTION

The EVOLUTION is a masterpiece of perfect craftsmanship in a classic, clear design. Up to ten layers of high-gloss lacquer give the simple grain of the solid ash timber a shining finish. Polished gold detailing is reflected in the crystal glass that protects the watches from environmental influences whilst simultaneously displaying them at their best. Walnut burl wood inlays and elegant velour provide a fitting ambience for the TIME MOVER®, which complete the EVOLUTION with their innovative, electronic control system. A true classic from the House of BUBEN&ZORWEG.

## EVOLUTION - FACTS

- TIME MOVER® for 4 or 8 watches
- Additional storage for 6 watches
- Hand-finished ash wood housing with 10 layers of high-gloss lacquer
- Exclusive inlay from selected European walnut burl wood
- Gold-plated and hand-polished applications
- Interior in finest velour, tabac
- Viewing window

## TECHNICAL DATA

- Evolution 4:  
237 x 305 x 240 mm
- Evolution 8:  
237 x 494 x 240 mm
- Mains Operation
- Battery Operation

# COSMOPOLITAN

Valuable pieces of jewellery are always masterpieces of exquisite craftsmanship, labours of love representing hours of painstaking work by experienced, talented jewellers. These pieces are destined to transcend generations. They will make eyes light up and hearts beat more quickly. Jewellery pieces such as these deserve fitting storage in a surrounding which is as perfect in its workmanship, design and materials as the jewels themselves. The COSMOPOLITAN by BUBEN&ZORWEG is such a cassette which lovingly houses selected pieces of jewellery.

## COSMOPOLITAN – FACTS

- Jewellery case with 2 drawers
- Hand-finished housing with 10 layers of high-gloss lacquer
- Crystal mirror inlay
- Hand-polished, gold-plated handle and lock
- Interior in finest black velour
- Lockable

## VERSIONS

- Classique: cherry wood housing with elm tree burl wood inlay
- Piano-white

## DIMENSIONS

- 185 x 356 x 260 mm





# A PASSION FOR PERFECTION

We promise the lovers of our masterpieces nothing short of perfection. This obliges us to work flawlessly in production. And to ensure through careful checks that nothing but perfection leaves our premises.

Assembly line work is alien to us. Instead, our master craftsmen are responsible for their work and the end result. We employ only the best people in each segment, from the procurement of precious materials to engineering processes. Our master craftsmen continuously face challenges in the form of new ideas, unusual designs and ambitious innovations - and master each one with flying colours. After all, every masterpiece is one of a kind that is intended to evoke pride and elation in its owner.

That is what we strive for. With passion and dedication.





15:48:23:82

#### REFINEMENT

Great things come into being when a material meets its master. Perfection as daily practice - in our own manufactory in Germany.





10:08:53:28

AGARTOS

Forms of life, elements of architecture - sweeping horizons and the warmth of home. And the reassuring glance at possessions one holds dear and knows are safe and sound.







# FINE TIMEPIECES

How often do you look at your watch each day!? Busy days, appointments, pressure ... the dark side of time. If you need to look at your watch all day, at least it is a comfort to read the time from a FINE TIMEPIECE from the House of BUBEN&ZORWEG. Perfect, exciting fine mechanics, master craftsmanship, stunning design: All of this will leave you wanting to check the time more often.



15:19:38:99

THE WIDE OPEN COUNTRY BEYOND  
MOMENTS: TIME IS THE SOIL IN WHICH  
TOMORROW GROWS.

INFINITY  
PAGE **92**

SILHOUETTE  
PAGE **94**

PARAGON  
PAGE **96**

ELLIPSE  
PAGE **98**

ALLURE  
PAGE **102**

AGARTOS  
PAGE **104**

PANTHEON  
PAGE **106**

ARTEMIS  
PAGE **107**

SONATA  
PAGE **107**

ONE  
PAGE **108**



# MANUFACTURE MOVEMENT CALIBRE **ALPHA 01 PENDULUM WORLD TIME**

## THE PREMIERE

**A**t some stage we arrived at the point where we ascertained that the movement that would meet our requirements did not exist on the market. What should we do? Enter into a compromise and select something from the available supply? That was out of the question.

BUBEN&ZORWEG stands for realising the unique. So why not combine our experience, our passion for innovation and our pioneering spirit to design, develop and produce precisely the movement we had in mind?

No sooner said than done. We are proud to present the ALPHA 01, the first movement from our proprietary production in Germany. It is a milestone for our company. And – as demonstrated by initial reactions from around the world – a strong impulse in the universe of unique luxury watches.

The aim of the development was to realise a world time display in a pendulum clock. And to create a movement with a 31-day power reserve and precision engineering that exceeds everything previously available in the sector.

## TECHNISCHE DATEN ALPHA 01 PENDULUM WORLD TIME

- Dead-beat Graham escapement with pallets made of hardened steel
- Seconds pendulum
- Second indication
- Main wheel with constant power and remontoire
- World time indication
- Weight drive (3,000 g) with a ball-bearing deflection roller
- 31 day power reserve
- Fine-polished, gold-plated wheels
- 6 high precision ball bearings and 6 rubies
- Polished pinions made of hardened steel
- Precision-milled and rhodanised plates made of hard brass with 5 columns
- Carbon fibre pendulum rod with extremely low heat expansion coefficient
- Pendulum bob with fine regulating system
- Rhodanised dial with sunray Brush



Some aspects were first made possible by innovative solutions. The heat expansion of the pendulum rod, for instance, had previously represented an obstacle. No matter the selected alloy, changes in length of up to 11  $\mu\text{m}$  per degree centigrade seemed unavoidable. Our solution: a pendulum rod made of carbon. It is virtually impossible to detect any alteration in length, so that any influence on accuracy can be ruled out.

Like every masterpiece from the House of BUBEN&ZORWEG, the ALPHA 01 is a masterpiece of craftsmanship. Each individual cog wheel is milled from solid metal (and not simply punched, as is otherwise common practice). We developed the tools to do so ourselves. Stainless steel drives prevent corrosion and wear. Gold-plated wheels not only provide a fascinating insight into its unique movement, but also contribute towards its longevity.

The rhodanised pendulum disc made of brass – itself a striking eye-catcher – is extremely resistant to mechanical damage. The entire movement consists of more than 350 individual parts, each of which passes through at least two processing steps. 500 hours of BUBEN&ZORWEG „Excellence Control“ guarantee that only perfect movements leave our manufactory. And – last but not least – the ALPHA 01 is intended to fascinate through its integrated complications, but on no account through complicated handling – hence the attention paid to the simple operation of the world time display.

The BUBEN&ZORWEG manufactory movement calibre „ALPHA 01 – Pendulum World Time“ is currently integrated in the models Grande infinity, Infinity and Silhouette. The Grande Précision is also available to every true watch aficionado with this fascinating feature.



# BUBEN&ZORWEG TOURBILLONS

## OFF TO PASTURES NEW

### WHY TOURBILLONS?

**G**ravitational forces have a constant effect on the clockwork of a mechanical clock. For example, the momentum of the balance wheel increases in the direction of the gravitational pull, and decreases in the opposite direction. Even though this effect is minimal, it still negatively impacts the precision of the instrument. The tourbillon counteracts the influence of gravity by permanently rotating key components of the clockwork. This is particularly useful for clocks, in which the balance wheel is not subject to movement like that in a watch.

In addition, a tourbillon is of course a complication which fascinates all mechanical clock enthusiasts, making it something special to own such a clock. The design and manufacture of a tourbillon bears witness to the exceptional competence and skill of the manufacturer.

### THE FIRST GENERATION

BUBEN&ZORWEG presented the first table clock with tourbillon in 2005 - the Pantheon Grande Réserve Tourbillon, whose limited 25 piece run was quickly sold out. The same was true of the Pythagoras World Time Tourbillon (2006) - as the first mechanical table clock with world time and tourbillon it sold out soon after the launch. Both models were testimony to BUBEN&ZORWEG's master craftsmanship, and their passion for offering unique and innovative products was enthusiastically welcomed by lovers of fine timepieces around the world.

#### TECHNICAL INFORMATION BUBEN&ZORWEG TOURBILLON

- Flying minute tourbillon with incorporated B&Z initials
- Swiss linear escapement
- 11 jewel bearings (synthetic rubies)
- Screw balance wheels with antimagnetic overcoil hairspring
- Incabloc shock absorbing mount



#### TECHNICAL INFORMATION DOUBLE-TOURBILLON

- Flying minute double tourbillon (157 components)
- 2 Swiss linear escapements with constant power device
- 2 screw balance wheels with antimagnetic overcoil hairsprings
- 24 bearings, Incabloc shock absorbing mount
- Tourbillon cage from extra light aluminium alloy - only approx. 1.7 g
- Total weight of mounted double tourbillon: less than 6.5 g





## THE SECOND GENERATION

BUBEN&ZORWEG presented the ELLIPSE GRAND REVERS DOUBLE TOURBILLON in 2007, a FINE TIMEPIECE whose complication, the double tourbillon, attracted attention from experts in the world of clock making. No other serial clock manufacturer had dared to attempt such an ambitious project. The double tourbillon was designed by BUBEN&ZORWEG's Atelier d'Horlogerie, where it was also manufactured. 157 individual components were laboriously installed and the system was aligned before subjecting the masterpiece to 500 hours of excellence control. The double tourbillon is a redundant system in which both systems function independent of each other and yet have an effect on each other - with the result that gravitational forces can practically be discounted, once more increasing accuracy.

## THE THIRD GENERATION

BUBEN&ZORWEG presented the third generation of pioneering tourbillons in Basel in 2009 - the OBJET DE TEMPS I and II and their Orbit Tourbillons, to great acclaim from aficionados. They showcase the movement of time at the place where it is most clearly articulated - at the tip of the minute hand. The Orbit Tourbillon makes a full circuit around the dial every hour, turning on its own axis once every minute in a masterpiece of watch making technology - harmonic imagery symbolising chronological cycles. Absolute precision is the measurable result of this fascinating, unique innovation, which required all our expertise and a great deal of perfectionism for the difficult task of balancing the minute hand. The boldness needed by BUBEN&ZORWEG to become the only manufacturer of large clocks with built in tourbillons makes us the first stop for passionate collectors of exclusive masterpieces. Our passionate commitment to perfection and innovation has once again stretched the limits of what is possible, redefining the terms true quality and first class masterpiece.

### TECHNICAL INFORMATION ORBIT TOURBILLON

- Flying tourbillon with light-weight aluminium construction and incorporated B&Z initials
- Precisely balanced light-weight aluminium minute hand
- 2 rotation intervals with differing running times (60 seconds and 60 minutes)
- Swiss linear escapement with constant power device
- Screw balance wheel with anti-magnetic overcoil hairspring
- Incabloc shock absorbing mount
- 17 bearings, 3 ball bearings
- 133 components
- Weight of the Orbit unit: 50.8 grams - includes 27 grams counterweight
- Weight of the individual tourbillon: 3.7 grams





# INFINITY

A weighty and impressive floor clock, much like a statue sculpted by a great artist. A clear-cut and powerful form, the timeless elegance of the design with a focus on the essential. An eye-catcher that will captivate the fantasy of every true watch aficionado. Its innovative manufactory movement calibre „Alpha 01- Pendulum World Time“ – available on request with a World Time Tourbillon or Orbit Tourbillon – makes watching time slip by a pure and unadulterated pleasure. The joy of watching the interplay between pendulum and movement.

Exquisite materials, a high-gloss finish with 10 layers of lacquer and perfect processing are what make the INFINITY a fascinating masterpiece of German craftsmanship that cuts a fine figure in any refined environment.



ALSO AVAILABLE:



## FINE TIMEPIECE WORLD TIME TOURBILLON LIMITED EDITION 25 PCS.

- Flying minute tourbillon with incorporated BUBEN&ZORWEG initials
- Swiss escapement with screw balance wheel and 11 jewel bearings
- 15 day German precision movement with constant power
- Indication of world time, date and power reserve
- Exquisite, ruthenium-coated dial with sunray-brush, goldstone bezel and glass chapter ring
- 500 hours BUBEN&ZORWEG "Excellence Control"



## FINE TIMEPIECE ORBIT TOURBILLON LIMITED EDITION 25 PCS.

- Unique BUBEN&ZORWEG ORBIT TOURBILLON, a rotating flying minute tourbillon on the minute hand
- Swiss escapement with screw balance wheel and 11 jewel bearings
- 15 day German precision movement with constant power
- Power reserve display
- Gold-plated cogs, aluminium hand with counterweight
- Exquisite, ruthenium-coated dial with sunray-brush and glass chapter ring
- 500 hours BUBEN&ZORWEG "Excellence Control"

## INFINITY - FACTS LIMITED EDITION 75 PCS.

- Housing with 10 layers of high-gloss piano stardust lacquer and macassar inlays
- Stainless steel applications
- Drawer for accessories and storage compartment
- State-of-the-art LED lighting technology with fading function
- Finest German craftsmanship

## FINE TIMEPIECE

- BUBEN&ZORWEG Alpha 01 Pendulum Clock
- BUBEN&ZORWEG Manufacture movement Calibre "Alpha 01 - Pendulum World Time"
- Dead-beat Graham escapement with pallets made of hardened steel
- Seconds pendulum
- Second indication
- Main wheel with constant power and remontoire
- World time indication
- Weight drive (3,000 g) with a ball-bearing deflection roller
- 31 day power reserve
- Fine-polished, gold-plated wheels
- 6 high precision ball bearings and 6 rubies
- Polished pinions made of hardened steel
- Precision-milled and rhodanised plates made of hard brass with 5 columns
- Carbon fibre pendulum rod with extremely low heat expansion coefficient
- Pendulum bob with fine regulating system
- Rhodanised dial with sunray Brush
- 500 hours BUBEN&ZORWEG "Excellence Control"

## TECHNICAL DATA

- 1940 x 430 x 255 mm
- 150 kg





# SILHOUETTE

This masterpiece of German craftsmanship is a wall clock of truly grand dimensions. Its self-assured design conveys transparency and lightness and effortlessly closes the circle of precision and innovative technology. Nothing obstructs the fascinating view of the unique manufactory movement calibre "Alpha 01- Pendulum World Time"; nothing prevents the proud owner from succumbing to the sedate swing of the pendulum and simply enjoying his luxurious FINE TIMEPIECE. Cleverly integrated LED light technology underscores the striking appearance of the SILHOUETTE.

Exquisite materials, a high-gloss finish with 10 layers of lacquer and perfect processing make the SILHOUETTE a much-admired talking piece in any environment.

## SILHOUETTE - FACTS

- Housing with 10 layers of high-gloss piano stardust lacquer and macassar inlays
- Stainless steel applications
- State-of-the-art LED lighting technology with fading function
- Finest German craftsmanship

## TECHNICAL DATA

- 1254 x 327 x 182 mm
- 36 kg

## FINE TIMEPIECE

- BUBEN&ZÖRWEG Alpha 01 Pendulum Clock
- BUBEN&ZÖRWEG Manufacture movement Calibre "Alpha 01 - Pendulum World Time"
- Dead-beat Graham escapement with pallets made of hardened steel
- Seconds pendulum
- Second indication
- Main wheel with constant power and remontoire
- World time indication
- Weight drive (3,000 g) with a ball-bearing deflection roller
- 31 day power reserve
- Fine-polished, gold-plated wheels
- 6 high precision ball bearings and 6 rubies
- Polished pinions made of hardened steel
- Precision-milled and rhodanised plates made of hard brass with 5 columns
- Carbon fibre pendulum rod with extremely low heat expansion coefficient
- Pendulum bob with fine regulating system
- Rhodanised dial with sunray Brush
- 500 hours BUBEN&ZÖRWEG „Excellence Control"



# PARAGON

The PARAGON WORLD TIME TOURBILLON is the crowning jewel of wall-mounted clocks. Different and fascinating. The complication – the highlight for any lover of fine timepieces – is the tourbillon, which is visible in the silver-coated dial with sunray brush. The PARAGON ORBIT TOURBILLON is also unique: The flying minute tourbillon rotates on the tip of the minute hand. Sterling silver inlays allow you to check the power reserve in an instant and the train of the BUBEN&ZORWEG signature weight is secured in 12 or 8 stainless steel ball bearings. Wherever you look or touch, you will experience absolute perfection and master craftsmanship – the key features of this FINE TIMEPIECE by BUBEN&ZORWEG.



## PARAGON WORLD TIME TOURBILLON – FACTS LIMITED EDITION 50 PCS.

- Flying minute tourbillon with incorporated B&Z initials, screw balance wheel and 11 jewel bearings
- 30 day German precision movement with constant power
- 12 stainless steel ball bearings in the train
- Indication of world time and date
- Exquisite, rhodanised dial with sunray-brush, goldstone bezel and glass chapter ring
- 9 kg BUBEN&ZORWEG crystal and stainless steel signature weight
- 30 pieces sterling silver inlay
- Hand-crafted housing made of selected macassar wood with stainless steel hinges and crystal glass
- Hand-crafted mother-of-pearl inlay in 4 housing screws
- 500 hours BUBEN&ZORWEG "Excellence Control"

## PARAGON ALPHA 01 – FACTS

- BUBEN&ZORWEG Manufacture movement Calibre "Alpha 01 – Pendulum World Time"
- Dead-beat Graham escapement with pallets made of hardened steel
- Seconds pendulum
- Second indication
- Main wheel with constant power and remontoire
- World time indication
- Weight drive (3,000 g) with a ball-bearing deflection roller
- 31 day power reserve
- Fine-polished, gold-plated wheels
- 6 high precision ball bearings and 6 rubies
- Polished pinions made of hardened steel
- Precision-milled and rhodanised plates made of hard brass with 5 columns
- Carbon fibre pendulum rod with extremely low heat expansion coefficient
- Pendulum bob with fine regulating system
- Rhodanised dial with sunray Brush
- 500 hours BUBEN&ZORWEG „Excellence Control"

## TECHNICAL DATA

- 1335 x 310 x 167 mm
- 45 kg

## PARAGON ORBIT TOURBILLON – FACTS LIMITED EDITION 25 PCS.

- Unique BUBEN&ZORWEG ORBIT TOURBILLON, a rotating flying minute tourbillon on the minute hand
- 21 day German precision movement with constant power
- 8 stainless steel ball-bearings in the train
- Gold-plated cogs, aluminium hand with counter-weight
- Exquisite, ruthenium-coated dial with sunray-brush and glass chapter ring
- 10 kg BUBEN&ZORWEG crystal and stainless steel signature weight
- 30 pieces sterling silver inlay
- Hand-crafted housing made of selected macassar wood with stainless steel hinges and crystal glass
- Hand-crafted mother-of-pearl inlay in 4 housing screws
- 500 hours BUBEN&ZORWEG "Excellence Control"

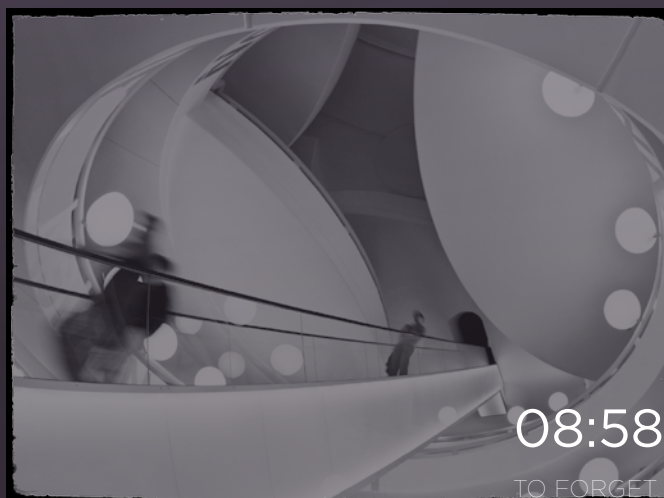






# ELLIPSE

Watching time as it ticks by ... and to lose track of time, fascinated by detail. The satisfaction of partaking in perfection. Passionate lovers of fine timepiece derive great pleasure from the study of precision mechanics, the interplay between springs and cogs, from a design that accentuates the inner values as coequal.



08:58:36:45

TO FORGET TIME - TO LIVE FOR  
THE MOMENT, TO ENJOY THE  
GIFT OF TIME WITH EVERY SENSE



# ELLIPSE GRAND REVERS EXTRÊME DOUBLE TOURBILLON

Fascination. Refined precision mechanics in a housing that reflects the unique nature of this luxurious FINE TIMEPIECE. Elegant materials, expensive details, the gentle shine of gold coating, the perfect combination of glass, metal, veneer and hand-chosen precious woods ... a masterpiece of design and craftsmanship.

The passionate lover of fine timepieces will be pleased to see his own face in the ELLIPSE GRAND REVERS DOUBLE TOURBILLON: the visible double tourbillon with its 157 parts, the precise interaction of components meeting the eyes of the observer as if it were a play unfolding on a stage ... the multifaceted design, not only of the dial, but also the displays – moon phase, world time, power reserve and time itself. Do rotating pedestal presents this exquisite FINE TIMEPIECE from its best sides – both of them.



## ELLIPSE GRAND REVERS EXTRÊME DOUBLE TOURBILLON LIMITED EDITION 10 PCS.

- Unique BUBEN&ZORWEG DOUBLE TOURBILLON, two independently running tourbillons connected by integral gears, redundant system with 157 high-precision components
- Double-sided BUBEN&ZORWEG Fine Timepiece with indication of date, moon phase (mother of pearl), power reserve and large world time display at the rear
- 15 day German precision movement with constant power
- 12 stainless steel bearings in the train
- Exquisite, three-dimensional dial with mother of pearl inlay, set with diamonds
- Diamond-studded 18 carat white gold bezel around the double tourbillon
- Diamond-studded 5 minute markers in 18 carat white gold
- Moon disc with silver 935, mother-of-pearl moon, set with diamonds
- 18 carat gold world time display with mother-of-pearl inlay, set with diamonds
- Cocobolo inlay with 18 carat white gold and mother-of-pearl, set with diamonds
- 500 hours BUBEN&ZORWEG "Excellence Control"

## JEWELS

- 6,791 jewels set in 18 carat white gold
- 5,760 jewels, 43.27 ct / G - IF
- 1,031 sapphires
- 99 pieces of mother-of-pearl inlays
- 18 pieces goldstone inlays

## TECHNICAL DATA

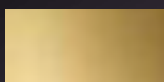
- Ellipse: 285 x 300 x 130 mm
- 18 kg
- with column: 1425 x 410 x 305 mm
- 58 kg
- Mains Operation (column)

## VERSIONS

### RHODIUM



### GOLD



## ELLIPSE GRAND REVERS DOUBLE TOURBILLON LIMITED EDITION 75 PCS.

- Unique BUBEN&ZORWEG Fine Timepiece with DOUBLE TOURBILLON and 15 day German precision movement
- Exquisite, rhodanised, three-dimensional dial with sunray brush and rhodanised applications
- Silver (935) etched bezel around the double tourbillon
- Mother-of-pearl moon disc
- Large world time display at the rear
- Luxurious, hand-crafted, rhodanised housing, polished and brushed, rotatable base mounted with ball bearings, macassar wood inlay, crystal glass

# ELLIPSE GRAND REVERS TOURBILLON

A sphere of uniqueness discernible at the very first glance is what distinguishes true masterpieces. And fascination grows with every glance: a new detail catches the eye here and there, whilst the interplay between design, innovative clock-making craftsmanship and perfectly processed refined materials enraptures the beholder.

It is not least the impressive flying minute tourbillon built in to the ELLIPSE GRAND REVERS TOURBILLON from the House of BUBEN&ZORWEG that brings the unique fine mechanics of this gem to the foreground at the exact point where precision itself becomes visible, namely in the highly accurate display of time. A FINE TIMEPIECE that is always an enjoyable experience ... at every glance.



## ELLIPSE GRAND REVERS TOURBILLON LIMITED EDITION 25 PCS.

- Flying minute tourbillon with incorporated B&Z initials
- Swiss linear escapement
- 11 jewels (synthetic rubies)
- Screw balance wheel with anti-magnetic overcoil hairspring
- Incabloc shock absorbing mount
- 15 day German precision movement with constant power
- 12 stainless steel ball bearings in the train
- Exquisite three-dimensional dial with sunray brush and rhodanised/gold-plated applications
- Mother-of-pearl moon disc
- Large world time display at the rear
- Luxurious, hand-crafted, gold-plated housing, polished and brushed, rotatable base mounted with ball bearings, cocobolo wood inlay, crystal glass
- 500 hours BUBEN&ZORWEG "Excellence Control"

### VERSIONS

#### RHODIUM



#### GOLD









# ALLURE

Precious, unique table clocks are a tradition at BUBEN&ZORWEG. The ALLURE has set another fascinating milestone in this field.

The secret behind the fascination is a harmonious trio: innovation paired with courage, strength and passion. Stylish, moving design. German craftsmanship in perfection. Well-balanced, proportionate lines encircle the elegant dial. Its gentle shimmer is unique: special production processes developed by BUBEN&ZORWEG enable the special effect. Every glance at the masterpiece will evoke a sense of joy and pride of ownership.

A generous use of glass provides interesting insights into the precise workings of the inner mechanism. An integrated LED lighting system turns the ALLURE into a real shining example of successful design. The "clock-in-clock" is also unusual – it is a TIME MOVER® beneath the dial that can hold the ALLURE owner's favourite precious watch. Alternatively, a weather station can be installed instead of the watch winder.



## ALLURE - FACTS

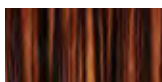
- 8 day German precision movement
- Swiss escapement with screw balance wheel and 11 jewel bearings
- Rhodanised dial with sunray brush
- 500 hours of BUBEN&ZORWEG "Excellence Control"
- Crystal glass door
- Macassar-aluminium housing with 10 layers of high-gloss lacquer
- State-of-the-art LED lighting technology with fading function
- Finest German craftsmanship
- Available either with 1 TIME MOVER® (ALLURE COLLECTOR) or a weather station (ALLURE WEATHER STATION)

## DIMENSIONS

- 290 x 230 x 195 mm

## VERSIONS

### MACASSAR



### PIANO STARDUST





# AGARTOS

## BUBEN&ZORWEG AGARTOS TOURBILLON LIMITED EDITION 25 PCS.

- Flying minute tourbillon with incorporated B&Z initials, screw balance wheel and 11 jewel bearings
- 8 day German precision movement
- Exquisite, rhodanised dial with sunray-brush and rhodium-plated ring
- 500 hours of BUBEN&ZORWEG "Excellence Control"
- TIME MOVER® for 5 watches
- "Magic Slide" electro-mechanical opening and closing system
- Aluminium-wood chassis
- High-gloss, metallic piano lacquer, interior in finest Italian nappa leather
- Rhodanised metal applications
- State-of-the-art LED lighting technology with fading function
- Optional column with integrated BUBEN&ZORWEG HiFi system Monolog 10 with music streaming and Bluetooth (for details see page 144)
- Finest German craftsmanship



It is obvious just from looking at the AGARTOS from BUBEN&ZORWEG that something fascinatingly new has been created: an object born of the company's commitment to merge bold innovation, progressive design and master craftsmanship to form lasting values – a very challenging fusion given the gracious, sweeping form of the object.

The AGARTOS is a unique example of a successful fusion. Passionate watch collectors will feel compelled to call the masterpiece their own when their eyes come to rest on the BUBEN&ZORWEG TOURBILLON integrated in the high precision German clock (AGARTOS Tourbillon). A porthole that allows the beholder to catch a glimpse of the "intrinsic values" as they move in perfect harmony with time. The AGARTOS is more than "just" a precious clock: the doors swing magically open to display the otherwise heavily guarded precious timepieces of the passionate collector against a befitting background. Innovative sensor technology grants access exclusively to the owner of the AGARTOS.

## BUBEN&ZORWEG AGARTOS LIMITED EDITION 75 PCS.

- 8 day German precision movement
- Exquisite, rhodanised dial with sunray-brush and rhodium-plated ring
- 500 hours of BUBEN&ZORWEG "Excellence Control"
- TIME MOVER® for 5 watches
- "Magic Slide" electro-mechanical opening and closing system
- Aluminium-wood chassis
- High-gloss, metallic piano lacquer, interior in finest Italian nappa leather
- Rhodanised metal applications
- State-of-the-art LED lighting technology with fading function
- Optional column with integrated BUBEN&ZORWEG HiFi system Monolog 10 with music streaming and Bluetooth (for details see page 144)
- Finest German craftsmanship

### TECHNICAL DATA

- 416 x 396 x 277 mm
- 20 kg
- Mains operation

### VERSION

#### METALLIC BLACK







# PANTHEON

A view of the entire world's time – this is the global perspective offered by the PANTHEON WORLD TIME. The design with the Tourbillon visible in the dial allows a glimpse at the precision mechanics; both models will please passionate lovers of fine timepieces with their viewing windows which allow one to study the clock's movement. The classic design and the perfection of this masterpiece are typical of the work of BUBEN&ZORWEG.



## PANTHEON WORLD TIME FACTS

- 15-day German precision movement with constant power
- Swiss escapement with screw balance wheel and 11 jewel bearings
- 12 stainless steel bearings in the train
- Indication of second, date, power reserve and world time
- Exquisite, silver-plated/rhodiumised dial with sunray brush
- Hand-crafted housing with 10 layers of high-gloss lacquer
- Hand-polished metal inlay and crystal glass
- 500 hours BUBEN&ZORWEG "Excellence Control"

## PANTHEON WORLD TIME TOURBILLON LIMITED EDITION 50 PCS.

- Flying minute tourbillon with incorporated B&Z initials, screw balance wheel and 11 jewel bearings
- 15 day German precision movement with constant power
- Nickel-plated hour and minute hands (Noir)
- Indication of date, power reserve and world time
- Exquisite silver-plated/rhodiumised dial with sunray brush
- Hand-crafted housing with 10 layers of high-gloss lacquer and metal inlay
- 500 hours BUBEN&ZORWEG "Excellence Control"

## TECHNICAL DATA

- 290 x 290 x 170 mm



# ARTEMIS

The melodic musical mechanism that marks the passing time with three charming melodies is sure to put any lover of fine timepieces in a harmonious mood when greeted by the melodies emitted by this masterpiece of the House of BUBEN&ZORWEG. The ARTEMIS is a classic in the best sense: The clock mechanism features German-made, BUBEN&ZORWEG 500 Hours Excellence Control certified technology.

True lovers of fine timepieces will discover a pleasant surprise when they look closer: a viewing window in the housing which offers interesting insights into ARTEMIS' mechanics.

## ARTEMIS - FACTS

- German 8-day spring-driven movement
- Swiss escapement with screw balance wheel and 11 jewel bearings
- Indication of second, date, day of the week, month and moon phase
- 3 melody striking mechanism with automatic overnight shutdown
- Exquisite, silver-plated dial with sunray brush
- Hand-finished housing with 10 layers of high-gloss lacquer
- Hand-polished metal inlay and crystal glass
- 500 hours BUBEN&ZORWEG "Excellence Control"

## ARTEMIS WORLD TIME FACTS

- German 8-day spring-driven movement
- Swiss escapement with screw balance wheel and 11 jewel bearings
- Indication of second, date, day of the week and world time
- 1/2 hour chime with optional overnight shutdown
- Exquisite, silver-plated dial with sunray brush
- Hand-finished housing with 10 layers of high-gloss lacquer
- Hand-polished metal inlay and crystal glass
- 500 hours BUBEN&ZORWEG "Excellence Control"

## TECHNICAL DATA

- 233 x 175 x 150 mm



# SONATA

The housing of the SONATA is like a picture frame for the German-made, precision clock movement. It allows an unhindered view of the mechanics from all sides. The combination of a black wooden frame with 10 layers of high-gloss lacquer, crystal glass and nickel-coated metal inserts that transform even the smallest BUBEN&ZORWEG FINE TIMEPIECE to a work of art.

## SONATA - FACTS

- German 8 day spring-driven movement
- Swiss escapement with screw balance wheel and 11 jewel bearings
- Ruthenium-coated with nickel-plated hands
- Luxurious, hand-finished black-wooden housing with 10 layers of high-gloss lacquer

- Stainless steel doors open to the front and the back
- Nickel plated metal inlay and crystal glass
- 500 hours BUBEN&ZORWEG "Excellence Control"

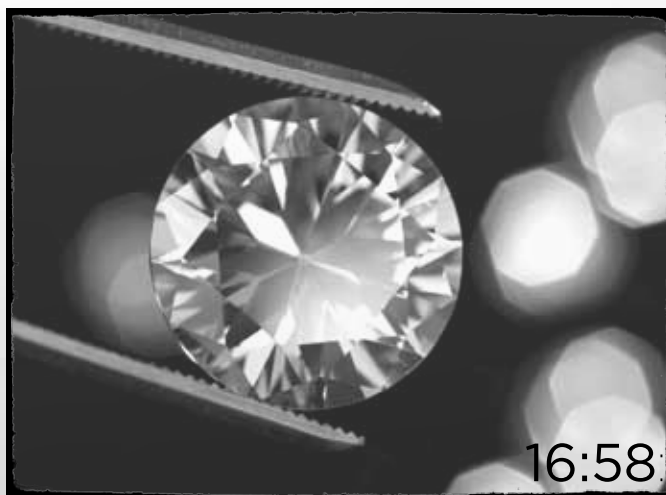
## TECHNICAL DATA

- 140 x 125 x 95 mm



# ONE

Time is my companion. As reliable as eternity. As demanding as the moment. Everything finds its place in time. The significant and the trivial. Life's beautiful moments - bound to time. How wonderful it is in such moments to gaze at time, the one and only, unique ... wearable...



16:58:36:45

A TIME, THIS ONE TIME. IN  
SO MANY WONDERFUL  
FORMS. TIMELESS.







# ONE

The ONE has quickly advanced to a leading position among luxury wrist watches and has since grown into an entire family of fascinating models – a “must have” for any friend of luxurious perfection.

Unique: the ONE DELUXE features the pure beauty of precious diamonds that lend additional flair to the unmistakeable design of the ONE. The calibre BZ 01 – a version of the MHO from Martin Braun adapted exclusively for us – stands out through a flying minute tourbillon and a perpetual calendar as an additional complication. The TIME MOVER® HANDWOUND, an equally thrilling masterpiece of innovative technology that is the perfect companion for the handwound movement of the ONE, is included in delivery.

The ONE DUAL TIME is our thinnest watch to date, but nonetheless features a second time zone display in the dial. The compact elegance of the ONE DUAL TIME affords it a unique position among luxurious automatic watches.

Designs in rose gold, white gold, platinum or stainless steel enable a very personal choice of which ONE to acquire. And collectors will be delighted with the limited editions that will secure the lasting value of these masterpieces.

## ONE DELUXE – FACTS

- See the One Perpetual Calendar for technical details
- Total weight of the diamonds: approx. 5.2 carat
- Gem quality is G-IF
- The bezel has approx. 62 diamonds with a trapeze cut
- Row with approx. 58 diamonds at the case centre
- Single rose-cut diamond set in the crown
- 34 diamonds in the clasp
- Rose gold housing (4N)

## LIMITED EDITIONS

### ONE PERPETUAL CALENDAR

- Deluxe Rose Gold: 9 pcs.
- Platinum: 49 pcs.
- Rose gold: 99 pcs.
- White gold: 99 pcs.

### ONE DUAL TIME

- Rose gold: 99 pcs.





## ONE TOURBILLON - FACTS LIMITED EDITION 25 PCS.

### TOURBILLON

- Flying minute tourbillon based on A. Helwig
- Extra-large balance wheel with a diameter of 14.1 mm to stabilise vibrations
- Weight: 0.62 g
- Adjusted in five positions
- KIF shock absorbers
- Silicium anchor and silicium escapement wheel
- Keyless fine adjustment

### MOVEMENT

- Calibre BZ01 Tourbillon Manufacture handwound movement
- Watch diameter 48 mm
- Movement diameter 39.5 mm
- 49 rubies
- 144-hour power reserve
- 18,000 A/h
- All wheels with "Moulure" (in compliance with the Geneva Seal Standard)
- Zyclovente gear teeth
- Two tension springs for optimised drive torque
- Indirect wheelwork drive to decouple the tension spring force
- Power reserve display

### WATCH CASE

- 18 carat rose gold housing
- Onyx inlays
- Curved sapphire glass
- Integrated genuine alligator leather strap
- Waterproof 5 ATM

## ONE DUAL TIME - FACTS

### MOVEMENT

- Manufacture Movement Automatic
- Calibre 3923A
- Watch diameter 44 mm
- Movement diameter 30.4 mm
- 30 jewels
- 65-hour power reserve
- 28,800 A/h
- Analogue display
- Date indication

### WATCH CASE

- 18 carat rose gold or stainless steel housing
- Curved sapphire glass
- Integrated genuine alligator leather strap
- Waterproof 5 ATM

### DIAL

- Dial in champagne with golden indexes or in black with silver indexes



One Tourbillon



One Dual Time



One Perpetual Calendar

## ONE PERPETUAL CALENDAR - FACTS

- Calibre BZ01-MHO Manufacture handwound movement
- 46 mm diameter watch
- 39.5 mm diameter movement
- 58 Jewels
- 156 hour Power Reserve and extraordinary large balance wheel
- 18,000 A/h
- 312 parts
- DYS Escapement (Dynamized Swiss Escapement)
- Silicium Anchor and Silicium Escapement Wheel
- Fine Adjustment System
- Fully settable and adjustable Perpetual Calendar
- Power Reserve Indicator
- Balance with screws, made of Glucydur
- All wheels made after Geneva Seal Standard with „Moulure“
- Zyclovente gear teeth
- Onyx inlays
- Integrated genuine alligator leather strap







# PUSHING THE BOUNDARIES OF POSSIBILITY

We would never have enjoyed doing things the way most others do them. And had we done so, we would never have reached the position we currently find ourselves in: namely in the fascinating world of luxurious lifestyles, surrounded by people who have also done things differently to achieve what they have achieved.

Our passion for innovation begins with the initial idea for a new creation, often even earlier... with an idea for something that has never before existed in this way. To us, innovation is far more than just the use of the latest technology. Innovation is creative thinking without limitation.

That is how the notion came about to put a safe at the heart of a luxurious interior. It was also the inspiration to develop the TIME MOVER® HANDWOUND that bestows a new value on handwound watches. We approach every last detail, every last screw in this way, always in search of the better solution. The creative quantum leap. Innovation.

[illegible]









14:28:32:88

X-TREME 007

Nothing is impossible. A bountifulness upon which  
Individuality thrives. Uniqueness is created.  
Becomes a dimension. And values remain ...



# SAFES

Sharing beautiful things with others enriches our lives and is surpassed only by one other greater pleasure: sharing the enjoyment of particularly precious things with people we treasure. To open the safe or humidor ... especially when it is a masterpiece from the House of BUBEN&ZORWEG, fascinating in design and appropriate for the grandeur of the moment.



08:59:59:71

THE MOST VALUABLE ASPECTS OF TIME  
ARE NOT MEASURED IN SECONDS  
BUT RETAINED IN THE HEART

X-007 EXTREME / X-007  
PAGE **122**

MAGNUM  
PAGE **126**

GALAXY  
PAGE **130**

COLLECTOR SAFE  
PAGE **134**

COLLECTOR SAFE XL  
PAGE **135**

COLLECTOR SAFE XXL  
PAGE **136**

COLLECTOR SAFE INBUILT  
PAGE **137**

GRAND CONNOISSEUR / XL  
PAGE **139**



# TOTALLY CUSTOMISED. AND SAFE. LUXURY SAFES MADE TO MEASURE

**S**ecurity is naturally an issue in the world of luxurious preciousities, exclusive collections and unique works of art. BUBEN&ZORWEG and its masterpieces of craftsmanship are very much at home in this world – and so it was only logical that we should focus our passion for innovation, design and perfection on the topic of “safes”. With success – we became market leaders in the field of luxury safes within a few short years.

## SECURITY FOR ROYALTY AND VIPS

Our models can be found in royal palaces and the offices of CEOs of global corporations. Our safes combine presentation and security for the values held dear by world-famous stars of sport, cinema and culture. Safes from BUBEN&ZORWEG afford the kind of security for gold bars, extensive watch collections and single works of art that allows the owner to relax and derive pleasure from his ownership.

One thing was clear right from the start when we first turned our attention to safes: we did not want to design ugly strongboxes that would be better off in a dark cellar than a luxurious environment. Our safes are meant to function and enthrall where they belong: in the midst of life. As powerfully designed eye-catchers in reined interiors. Not immediately recognisable as a safe... and a fascinating experience for those who are permitted to take a second glance.

A safe for someone's most treasured possessions, the things they hold most dear, is a very personal challenge. Our models define a – very flexible – framework that is individually configurable in virtually every regard. We spend a lot of time on discussing plans in person so that the customer ultimately gets what he and his environment really want: a unique masterpiece that is a safe haven for unique values and collector's pieces.

## CUSTOMISED VALUE CONSERVATION

From the futuristic X-007 EXTREME, the only safe in the world to raise its valuable content as if by lift at the touch of a button, to the mighty Magnum that not only commands a room through its powerful personality but also sweeps its doors elegantly into the safe upon opening. At the top of the list of priorities, in addition to the paramount aspect of security, is the aspect of unique customisation that achieves so much more than simply satisfying the personal requirements of the safe's owner.

Security? BUBEN&ZORWEG banks on systems that were originally developed and certified for use in Swiss banks. Innovative materials that have enabled a significant reduction in weight... a prerequisite for the ability to install our safes in rooms without any static preparations.

All in all: masterpieces of German craftsmanship typical of BUBEN&ZORWEG. Created to afford precious values a representative surrounding and optimum security.

Find more Interior Solutions on  
[interiors.buben-zorweg.com](http://interiors.buben-zorweg.com)





# STATE OF THE ART

## THE TECHNOLOGY BEHIND THE SAFES FROM BUBEN&ZORWEG

### WHAT MAKES OUR CUSTOMERS SO SURE THAT A SAFE FROM BUBEN&ZORWEG REALLY IS SAFE?

**W**e bank on the latest technology used to protect billions in value around the world in banks, jewellery depots, museums, etc. Locking systems from the strongholds of German security technology and high-security materials such as RELASTAN® guarantee the high level of protection our customers can expect for their valuables. Independent VdS certification serves to demonstrate the high standards met by our safes.

### THE LOCKS WE USE ARE MAJOR ELEMENTS OF SECURITY:

#### PAXOS COMPACT WITH ROTARY KNOB INPUT

An electronic high-security locking system that affords the utmost security through a redundant construction design. The input to the electronic security system via the rotary knob is entirely electronic and activates a motor that operates a gear system to unlock the locking bolt. There are two of all security-relevant components. The lock will continue to work trouble-free if a component should fail. The statistical lifetime of the lock is defined as 15 million hours.

(Installed in the X-007 EXTREME, X-007; certifications: EN 1300 B/C/D, ECB-S, VdS Classes 2/3/4, BSI 7500, UL Type 1)

#### COMBI B 30

This electronic combination lock features electronic redundancy: the rotary knob is simply removed in the event of an electronic malfunction. This reveals the concealed keyhole; the lock can then be opened using the two-way key. Software enables easy lock programming and also allows the event memory to be read out.

(Installed in the MAGNUM; certifications: EN 1300, ECB-S, VdS Class 2)

#### WITTKOPP PRIMOR 3010 – LEVEL 15

The lock is operated via an electrically driven locking bolt. The spring-loaded bolt jumps automatically into the locked position. The electronic lock is supplemented by a key-operated lock (mechanical redundancy) so that the safe can be opened if, for instance, the code is forgotten or the power supply fails. (Installed in COLLECTOR SAFES, GALAXY, GRAND COLLECTOR, MIRAGE and others)

#### ALARM SYSTEM

We also offer the supplementary BUBEN&ZORWEG alarm system that is equipped with an integrated siren and can be connected to the building's alarm system. Sensors on the doors and rear panels as well as shock sensors react in the event of unauthorised access attempts. A long-lasting battery keeps the alarm system functional for up to three days in the event of a power failure. It is activated and deactivated using a transponder.

#### TRACKING SYSTEM

Furthermore, we also offer the optional integration of a tracking system for locating the safe and therefore the ability to track your valuables to any location in the world. The tracking system is a combination of GSM and Radio Frequency (RF) technology. The system is powered by battery (lifetime: 10 years) and can localise your safe even in locations or buildings where GPS reception is not possible.





## TEST PROCEDURE FOR VDS CERTIFICATION

The VdS testing process provides for the use of striking tools, power tools and flame cutters during attempts to access a safe. These intense endurance tests serve to ascertain the resistance to all possible external influences to ensure the safe and its contents are well-protected. It goes without saying that all safes from BUBEN&ZORWEG are VdS-certified.

### A ATTACK ...

The materials used by BUBEN&ZORWEG to build safes are subject to tough destructive tests under brute force. Flame throwers and electric arcs don't stand a chance.

### B ... IS THE BEST ...

Heavy machinery is employed to simulate malicious attacks. They impressively demonstrate our resistance to criminal energy.

### C ... FORM OF DEFENCE

After these attempts as safe-breakers we – or rather the test engineers at VdS – can rest assured: safes built to this standard have truly earned their security certificate.

# X-007 EXTREME

"It is only with the heart that one can see rightly," said Saint-Exupéry's little prince - and BUBEN&ZORWEG have developed the X-007 EXTREME for the precious things that are dear to your heart. An object that does not reveal its purpose. A safe that conceals itself whilst lending an air of monumental ornamentalism to any room.



09:00:02:58

EVERY STEP HAS ITS OWN  
TIME. THE RIGHT STEPS  
AT THE RIGHT TIME LEAD  
TO SUCCESS.





# X-007 EXTREME / X-007



The mechanism with which the X-007 EXTREME displays the values it protects is one of a kind in this world: it raises the safe's precious contents majestically upwards with a smooth gliding motion. TIME MOVER® units and drawers for jewellery and documents can be combined in the basic version – but there is also an option to install a concealed showcase behind spy-glass that becomes transparent on command. Finest leather, 10 layers of high-gloss lacquer, stainless steel and an effective LED lighting system, all combined in perfect craftsmanship. The PAXOS® locking system has proved its worth in Swiss banks and other applications.

The X-007 EXTREME is customisable both inside and out. Lacquer and leather are available in a number of colours and virtually any interior variant that fits inside the safe is implementable – from up to 18 TIME MOVER® units to a high-security presentation showcase for works of art.



## X-007 EXTREME - FACTS

- High-security safe with **Vds II** (German Security Certification)
- Worldwide unique inbuilt elevating mechanism
- Patented safe wall construction from RELASTAN®
- High-security PAXOS® compact locking system
- view protected showcase behind two-way mirror spy glass with 9 TIME MOVER® and universal presentation space for collectibles
- optional available with 18 TIME MOVER®, without presentation space
- 2 front drawers and side drawers for storing jewellery, document folders or other valuable items
- hand-polished stainless steel applications
- State-of-the-art LED lighting with fading technology
- Emergency crank for opening the safe in the event of a power failure
- Finest German craftsmanship

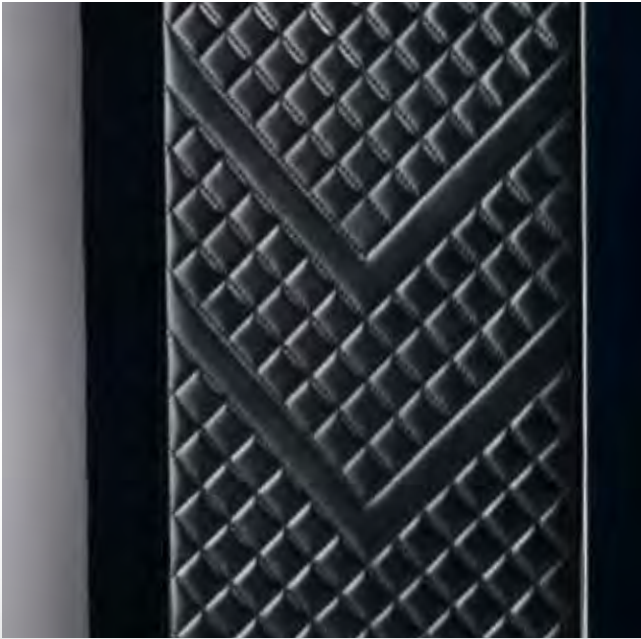
## TECHNICAL DATA

- Closed: 1246 x 798 x 665 mm
- Open: 2046 x 798 x 665 mm
- 580 kg
- Mains operation

## VERSION

Black Stardust / leather with diamond-stitching





#### X-007 - FACTS

- High-security safe with **Vds II** (German Security Certification)
- Worldwide unique opening mechanism
- Patented safe wall construction from RELASTAN®
- High-security PAXOS® compact locking system
- Connectible to the home alarm system
- TIME MOVER® for 21 watches
- Front and side drawers for storing jewellery or other valuables
- Hand-polished stainless steel applications
- State-of-the-art LED lighting with fading technology
- Lockable security glass door with high-security lock
- Emergency crank for opening the safe in the event of a power failure
- Finest German craftsmanship

#### TECHNICAL DATA

- Closed: 1200 x 750 x 615 mm
- Open: 2000 x 750 x 615 mm
- 580 kg
- Mains operation

#### VERSIONS

##### MACASSAR

Hand-crafted housing from selected macassar, interior in hand-stitched Italian leather, cognac or black



##### LEATHER

Hand-crafted housing covered in finest leather and exquisite macassar inlay; interior in hand-stitched Italian leather, diablo or black



# MAGNUM

A special time to behold precious treasures. Like a pearl in an oyster's shell. Like glinting ore in the crust of the Earth. Like the most valuable private items, concealed inside the MAGNUM from the House of BUBEN&ZORWEG. Security and aesthetic appeal beyond all reproach. And then... the indescribable pleasure of opening the safe.



14:03:15:87

TO STEM THE VALUE OF PERMANENCE  
AGAINST THE FLOW OF TIME...  
SUCH STRENGTH







# MAGNUM

Size matters ... alone the dimensions of the MAGNUM SAFE from the House of BUBEN&ZORWEG radiate a flair of utterly trustworthy security – tested and certified in accordance with the VdS I security standard. It is enthralling to see how BUBEN&ZORWEG have incorporated innovative functionality, fascinating design and master craftsmanship in an apparently down-to-earth object to create something never seen before.

The doors of the double-sided MAGNUM SAFE swing elegantly inwards and disappear inside the housing – a fascinatingly innovative solution that contributes just as much as the integrated LED lighting system to an effective presentation of the precious masterpieces concealed within. When the safe is closed the oval B&Z signature clock is not only an eye-catcher but also the signature for the origin of the entire object. In addition to adequate space for watch collections the Magnum also offers a secret compartment as extra storage space behind the watch winders.

An integrated HiFi system is also available as an optional extra to provide a befitting musical ambience for those moments spent enjoying a precious collection.





## MAGNUM - FACTS

- High-security safe with **Vds I** (German Security Certification)
- Electronic German high security locking system
- TIME MOVER® for 16 watches and 4 drawers, TIME MOVER® for 32 watches and 2 drawers or TIME MOVER® for 48 watches
- Unique "Pull & Slide" opening and closing mechanism with an extendible interior
- BUBEN&ZORWEG signature clock with a stainless steel bezel
- Hand-polished and brushed stainless steel appliques
- High-gloss lacquer in metallic black
- Hand-picked leather from German bulls, interior clad in fine black velour
- Hidden compartments behind the TIME MOVER® modules
- Storage drawers for watches, jewellery and documents
- Optionally available with doors in high-gloss Ebony Grigio
- Finest German craftsmanship
- For technical details see page 144/145

## TECHNICAL DATA

- 1330 x 1380 x 719 mm
- 650 kg
- Mains operation



## DESIGN

Hand-crafted housing clad in German bull's neck leather; hand-polished stainless steel inlay work; interior in finest velour and polished Ebony Grigio





# GALAXY

Many preciousities are shrouded in mystery. Something secretive. A particular story. A silent force. A personal relationship. Values like these require a special environment; they demand protection and to be presented only to those who are worthy. GALAXY offers an appropriate ambience for outstanding values... a shrine for the things that really matter.



14:03:15:87

HIGHLIGHTS: ENJOY WHAT  
YOU OWN. ACKNOWLEDGE  
THEIR PERMANENCE.



# GALAXY



An idea, a creation, a design in variations: GALAXY is available in various sizes with different features and functions. Every GALAXY is a typical BUBEN&ZORWEG safe. Each one a masterpiece of German craftsmanship with certified security (VdS I).

What at first glance appears to be an art deco piece can accommodate a valuable collection of watches as well as other preciousities in drawers clad in finest leather. Its pearl-white design offers a safe haven for the lady's valuables; the XXL version of the Gun Collector's Edition will appeal more to the gentleman. Those who like to have their valuables close to hand on the desktop will appreciate the security of the GALAXY TABLE TOP SAFE.



## GALAXY LINE - FACTS

- German electronic locking system
- Hand-crafted housing with folding doors
- Finest Italian nappa leather with croco imprint
- Housing with 10 layers of high-gloss lacquer
- Hand-polished stainless steel handles
- Interior in finest black velour
- Drawer fronts in high-gloss lacquer
- Swiss security lock
- State-of-the-art LED lighting with fading technology
- Optionally available with BUBEN&ZORWEG Alarm System
- Optionally available with BUBEN&ZORWEG Tracking System
- Optionally available with „Lady Butterfly“ handles
- Finest German craftsmanship
- For technical details see page 144/145





#### GALAXY - FACTS

- BUBEN&ZORWEG Safe SI-80, Safety class **Vds I** (German Security Certification)
- Redundant system with keypad input and emergency key

#### TECHNICAL DATA

- 1060 x 545 x 635 mm
- 220 kg
- Mains operation

#### GALAXY XL - FACTS

- BUBEN&ZORWEG Safe SI-110, Safety class **Vds I** (German Security Certification)
- Redundant system with keypad input and emergency key

#### TECHNICAL DATA

- 1362 x 637 x 547 mm
- 300 kg
- Mains operation

#### GALAXY XXL - FACTS

- BUBEN&ZORWEG Safe SI-150, Safety class **Vds I** (German Security Certification)
- Redundant system with keypad input and emergency key

#### TECHNICAL DATA

- 1772 x 637 x 547 mm
- 400 kg
- Mains Operation

#### OPTIONAL GUN COLLECTORS EDITION

- Luxurious presentation for 4 rifles and 6 handguns
- Additional compartment for ammunition
- Interior in hand-stitched Italian nappa leather



#### GALAXY TABLETOP - FACTS

- BUBEN&ZORWEG Vds certified safe with stainless steel bolts
- Optional column available

#### TECHNICAL DATA

- 480 x 529 x 460 mm
- 85 kg
- Mains operation

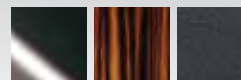


#### VERSIONS

High-gloss lacquer Pearl White / white leather



High-gloss lacquer Black Stardust/ Macassar / black leather



High-gloss lacquer Black Stardust / Burlwood / black leather



High-gloss lacquer Black Stardust / black leather

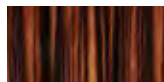


# COLLECTOR SAFE

Refined materials; precious look-and-feel; classic, almost puristic design: who could hazard a guess at the true purpose of the COLLECTOR SAFE? Practically invisible Swiss-made security technology identifies it as a VdS Class I safe. A safe haven for valuable watches and other precious items. The fascination surrounding the standalone version emanates from the exotic woods and many coats of high-gloss lacquer incorporated in this masterpiece of elitist craftsmanship.

## VERSIONS (HIGH GLOSS)

MACASSAR



EBONY GRIGIO



## COLLECTOR SAFE - FACTS

- BUBEN&ZORWEG Safe SI-80
- Redundant system with keypad input and emergency key
- Hand-crafted housing, piano finish with precious wood inlay, high-gloss
- 1 storage drawer (Gentleman Insert)
- Hand-stitched Italian nappa leather
- Interior in finest black velour
- Swiss security lock
- State-of-the-art LED lighting with fading technology
- Height-adjustable stainless steel feet
- Optionally available with BUBEN&ZORWEG Alarm System
- Optionally available with BUBEN&ZORWEG Tracking System
- Finest German craftsmanship
- For technical details see page 144/145

## TECHNICAL DATA

- 1210 x 555 x 505 mm
- 220 kg
- Mains operation



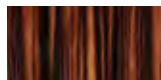
# COLLECTOR SAFE XL

Mistaking a safe for an attractive object of interior design instead of a strongbox is in itself an aspect of security. The COLLECTOR SAFE XL is the further development of the COLLECTOR SAFE. It measures 110 instead of 80 cm in height and therefore offers additional storage space for documents, artefacts and valuables alongside the customary eight TIME MOVER® modules and five drawers. The certified security standards that apply to the XL variant of the COLLECTOR SAFE remain as high as ever.



## VERSIONS (HIGH GLOSS)

MACASSAR



EBONY GRIGIO

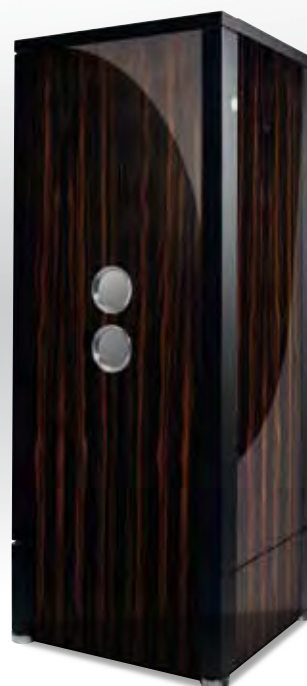


## COLLECTOR SAFE XL - FACTS

- BUBEN&ZORWEG Safe SI -110
- Redundant system with keypad input and emergency key
- Hand-crafted housing, piano finish with precious wood inlay, high-gloss
- Hand-stitched Italian nappa leather
- Interior in finest black velour
- Swiss security lock
- State-of-the-art LED lighting with fading technology
- Height-adjustable stainless steel feet
- Optionally available with BUBEN&ZORWEG Alarm System
- Optionally available with BUBEN&ZORWEG Tracking System
- Finest German craftsmanship
- For technical details see page 144/145

## TECHNICAL DATA

- 1450 x 555 x 505 mm
- 300 kg
- Mains operation





# COLLECTOR SAFE XXL

The pleasure derived from the valuable pieces of a collection increases all the more when the owner knows his preciousities are safe and sound. The COLLECTOR'S SAFE from BUBEN&ZORWEG banks on the latest security technology certified with the German VdS I grade – a masterpiece of innovative craftsmanship.

Superior content deserves a superior environment. Hence the appearance of the COLLECTOR'S SAFE when closed as an elegant eye-catcher in luxurious interior surroundings. When opened it reveals valuable automatic watches on integrated TIME MOVER® units and beautifully equipped, customisable drawers for jewellery, valuables and documents.

Weapon aficionados will find a uniquely luxurious showcase for their passion in the GUN COLLECTOR'S EDITION.

## COLLECTOR SAFE XXL – FACTS

- BUBEN&ZORWEG Safe SI -150
- German electronic locking system
- Redundant system with keypad input and emergency key
- Hand-crafted housing, piano finish with precious wood inlay, high-gloss
- Hand-stitched Italian nappa leather
- Interior in finest black velour
- Stainless steel handle with mother-of-pearl inlay
- Swiss security lock
- State-of-the-art LED lighting with fading technology
- Height-adjustable stainless steel feet
- Optionally available with BUBEN&ZORWEG Alarm System
- Optionally available with BUBEN&ZORWEG Tracking System
- Finest German craftsmanship
- For technical details see page 144/145

## OPTIONAL GUN COLLECTORS EDITION

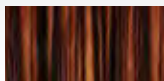
- Luxurious presentation for 4 rifles and 6 handguns
- Additional compartment for ammunition
- Interior in hand-stitched Italian nappa leather

## TECHNICAL DATA

- 1820 x 555 x 505 mm
- 380 kg
- Mains Operation

## VERSIONS (HIGH GLOSS)

### MACASSAR



### EBONY GRIGIO



# COLLECTOR SAFE INBUILT / XXL

The COLLECTOR SAFE INBUILT is available with the BUBEN&ZORWEG Safe SI-80 or with the SI-150. Both variants offer an ideal solution for safekeeping any unique collection. The design incorporates two-way mirror spy glass doors; this is an additional security aspect as it enables the safe to be “invisibly” integrated in any surrounding.



## COLLECTOR SAFE INBUILT - FACTS

- BUBEN&ZORWEG Safe SI-80
- Redundant system with keypad input and emergency key
- Suitable for recessed wall installation
- Housing a base in satin-finished black oak
- Two-way mirror spy glass door
- Hand-crafted housing, interior in finest Italian nappa leather
- State-of-the-art LED lighting technology with fading function
- Finest German craftsmanship
- For technical details see page 144/145

## TECHNICAL DATA

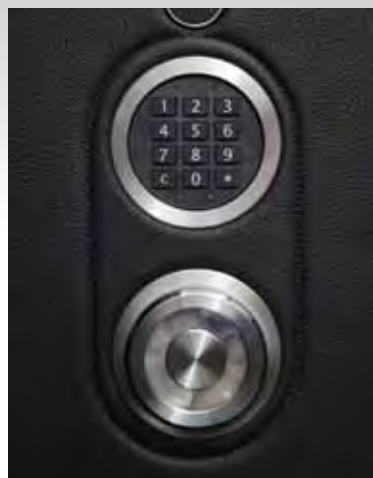
- 990 x 568 x 539 mm
- Mains operation

## COLLECTOR SAFE INBUILT XXL - FACTS

- BUBEN&ZORWEG Safe SI -150,
- Redundant system with keypad input and emergency key
- Suitable for recessed wall installation
- Housing a base in satin-finished black oak
- Two-way mirror spy glass door
- Hand-crafted housing, interior in finest Italian nappa leather
- State-of-the-art LED lighting technology with fading function
- Optionally available with BUBEN&ZORWEG Alarm System
- Optionally available with BUBEN&ZORWEG Tracking System
- Finest German craftsmanship
- For technical details see page 144/145

## TECHNICAL DATA

- 1887 x 568 x 539 mm
- Mains operation



# HUMIDORS

## PERFECT ENVIRONMENT FOR EVERY EXQUISITE CIGAR COLLECTION

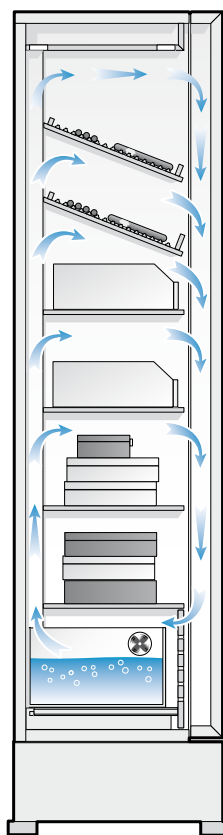
**C**igars maintain their value over many years when stored in an environment that accommodates the sensitive requirements of the tobacco leaf on air humidity. The depth and quality of the aroma can even increase under ideal conditions. Humidors from BUBEN&ZORWEG provide a perfectly balanced climate for fine cigars – as a basis for enhanced indulgence and the long-term storage of an exquisite cigar collection.

### TECHNOLOGY

An electronically controlled humidification mechanism regulates the evaporation and release of moisture in BUBEN&ZORWEG humidors – with much greater precision and reliability than passive humidification systems. High-precision measuring sensors guarantee an extremely fast response time – this keeps air humidity constant, for instance by immediate adjustment as soon as the cabinet is opened, always in dependence on the number of cigars in the humidor. The measuring system has an accuracy of plus/minus two per cent.

The model „Grand Connoisseur“ features a humidifier with a volume of 4 litres as a moisture reservoir; smaller humidors have a sponge (both systems are antiseptic to prevent germ formation). The sponge is a specialised product whose composition, swelling behaviour, capillary size and water storage volume are manufactured exclusively for the humidification system used by BUBEN&ZORWEG. The intelligent combination of ventilation with passive and active evaporation enables needs-based humidification. Moreover, the optimum air exchange inside BUBEN&ZORWEG humidors prevents dry zones and moisture pockets.

Cigars in a BUBEN&ZORWEG humidor are stored in an environment made of Spanish cedar – the best available material for supporting a cigar's aromatic development. Perfect micro-climate control and hand-picked wood make HUMIDORS from BUBEN&ZORWEG ideal for cigar ageing – i.e. storing cigars over decades in an environment that improves both quality and value.



### HUMIDOR

- Active, micro-processor controlled humidification system
- Absolute constant humidity
- An automatic air exchange system guarantees the optimum distribution of air humidity
- High-precision digital humidity sensor
- Antiseptic sponge
- Finest German Craftsmanship



# GRAND CONNOISSEUR

Each fine cigar is a masterpiece of manual craftsmanship – an art to which the GRAND CONNOISSEUR pays due deference. A masterpiece of German craftsmanship in its own right, this top-class humidor offers everything to quicken the pulse of every cigar aficionado as soon as he opens the door.

The delectable produce of outstanding cigar manufacturers is presented as if on a stage made of Spanish cedar. Innovative humidification technology monitored and controlled by micro-processors creates the perfect climate that – controlled with electronic precision – will maintain the character of the cigars at its best for decades. This is where the best specimens mature to perfection.

The GRAND CONNOISSEUR XL comes into its own when the cigar collection reaches a particular dimension – its ideally acclimatised environment can accommodate up to 2000 cigars. It is a much-admired and coveted centrepiece for noble surroundings such as a cigar lounge.



## GRAND CONNOISSEUR – FACTS

- Hand-crafted housing with precious wood inlay
- 4 portholes encased in stainless steel
- Swiss security lock
- State-of-the-art LED lighting technology with fading function
- Height-adjustable stainless steel feet
- Optionally available with BUBEN&ZORWEG Alarm System
- Optionally available with BUBEN&ZORWEG Tracking System
- Finest German craftsmanship
- For technical details see page 144/145

## HUMIDOR

- Humidor for 1.000 cigars
- Absolute constant humidity
- Extreme switching precision
- Automatic contamination protection
- Fully electronic water level indicator
- High-precision measurement sensors
- Air circulation system for optimum distribution of humidity
- Suitable for cigar ageing (long-term storage over several decades)
- Interior in Spanish cedar and mahogany for optimum aroma development

## TECHNICAL DATA

- 1820 x 475 x 505 mm
- 100 kg
- Mains operation

## GRAND CONNOISSEUR XL FACTS

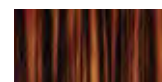
- Humidor for 2.000 cigars

## TECHNICAL DATA

- 1820 x 915 x 505 mm
- Mains operation

## VERSION

MACASSAR SEMI-GLOSS



# BUBEN&ZORWEG

## BOUTIQUES AND INSHOP BOUTIQUES



ALMATY – ASTANA – BEIJING – BERLIN – DALIAN – DOHA – DUBAI – GENEVA  
LOS ANGELES – LUGANO – MEXICO CITY – MOSCOW – NEW YORK – PRAHA –



If pictures paint a thousand words then personal encounters speak volumes. BUBEN&ZORWEG therefore cordially invites you to encounter our masterpieces in person at our exclusive boutiques.

To experience the impressive effect the exclusive BUBEN&ZORWEG objects have on a room. To see for yourself how the unique combination of design, innovation and perfect craftsmanship feels down to the last detail... touching is very much allowed, as nothing can replace the impression of "touch and feel".

BUBEN&ZORWEG boutiques are located around the world at the epicentres of business and success. We can promise you some very special moments if you put aside some time to visit a BUBEN&ZORWEG boutique on your next journey: the experience of perfection as the result of an uncompromising approach. You may well see things differently afterwards. We look forward to meeting you!

You can find a detailed directory of all BUBEN&ZORWEG boutiques and in-shop boutiques worldwide at [www.buben-zorweg.com/en/service/store-locator.html](http://www.buben-zorweg.com/en/service/store-locator.html)



- HONG KONG - ISTANBUL - KIEV - KRASNODAR - LISBOA - LONDON  
RIGA - RIYADH - SHANGHAI - SINGAPORE - TAIPEH - XIAMEN - YEREVAN - ZURICH





## BESPOKE LINE

### MAKING THE UNIQUE UNMISTAKABLE

**A** powerfully elegant design and sophisticated innovations are what make the masterpieces from the House of BUBEN&ZORWEG truly unique. Safes, Objects of Time®, etc., become very special eye-catchers when they unmistakably express the personality of their proud owner. When their design blends in seamlessly with the ambience through the self-confident choice of stylish colours. When the incorporated materials are selected to reflect personal taste and preference.

BUBEN&ZORWEG have taken another innovative step in the world of elitist interiors in the form of the BESPOKE LINE: our customers can utilise a fascinating range of options to exert their influence on the appearance of their masterpieces. That is the advantage of luxurious objects perfectly manufactured by hand – incorporating customised changes is no problem at all. And when all is said and done the proud owner can rightfully claim: „That is my own unique masterpiece! I worked on the design myself!“

#### CUSTOMISATION AS AN EXPRESSION OF PERSONALITY

Customisation can be very detailed and incorporate far-reaching modifications. We are always delighted to implement our customers' preferences within the scope of options available for each model, not only with regard to aspects of appearance, but also when it comes to customising the interior elements. After all, a Solitaire is an expression of personality and individuality in any sophisticated ambience.

The BESPOKE LINE shortens the journey of determining colour and material preferences within a broad spectrum. There is a selection of fascinating, shimmering lacquer finishes to choose from, ranging from the elegantly sophisticated to the strikingly powerful. The selection bandwidth of finest leathers enables the owner to adapt his future masterpiece to a specific ambience and his own personal style. Moreover, the customisable scope of each model in the BESPOKE LINE is clearly defined. Of course, all lacquer and leather variants meet the uncompromising quality standards that apply to the materials and craftsmanship of all of our masterpieces.

#### ANYTHING GOES – BUT IT ALL GOES FASTER WITH BESPOKE LINE

The advantage of the BESPOKE LINE lies in the prompt translatability of customisation. There is no need for separate calculations; all matters concerning feasibility, material characteristics, etc., are clear from the onset. Our design team has compiled the customisable variations in a way that makes reaching a decision for one of the fascinating variants that will soon become the centrepiece of the interior a pleasurable and stress-free experience.

We are, of course, always delighted to discuss customer preferences that are not covered by the BESPOKE LINE. Or that perhaps demand a more detailed degree of customisation on the basis of our recommended colours and materials. In these circumstances we discuss the details intensively with the customer so we can verify feasibility and provide a quote. To this end we need a little more time – time that we have already invested in the BESPOKE LINE and that enables our customers to take possession of their very own customised masterpiece without any additional expenditure of time or effort.

## Leather

Pearl white	Ivory	Amber	Diabolo red	Saddle brown
Havanna brown	Dark Purple	Sapphire	Graphite	Emerald green

## High-gloss lacquer

Arctic white	Silver	Mandarin orange	Ruby red	Bronze
Crystal Blue	Dark purple	Sapphire	Graphite	Emerald green





#### BUBEN&ZORWEG SIGNATURE CLOCK

- 8-day spring-driven movement of German manufacture
- Swiss escapement with screw balance wheel and 11 jewel bearings
- Balance spring visible in the dial
- Exquisite, rhodanised dial with sunray brush
- Removable, hand-polished stainless steel bezel
- 500 hours of BUBEN&ZORWEG "Excellence Control"



#### HIFI SYSTEM

- Integrated high-end HiFi media system
- Pioneering development by BUBEN&ZORWEG and Austrian sound specialist LOG Audio
- Wi-Fi streaming technology for wireless and lossless transmission of music and radio streams from iPhone, iPad, iPod-touch, PC and MAC via Airplay and Bluetooth
- 100 W high-end amplifier
- Electronically linearized indirect acoustics
- Perfect "Surround Sound" in high-fidelity thanks to the mono-beam reflection principle
- Unique synthesis of calotte, neodymium drive system, broadband system and bass reflex system
- Broadband system frequency range: 35 - 25.000 Hz



#### ALARM SYSTEM

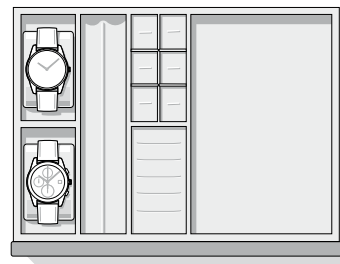
- Internal siren with approx. 108 dB
- Optional connection to the building's alarm system
- Activation / deactivation via transponder
- Status LED (alarm system active?)
- Sensors on doors and rear panels
- Additional shock sensor in the event of strong vibrations
- Long-lasting, tamper-proof rechargeable battery lasts for 3 days without a power supply



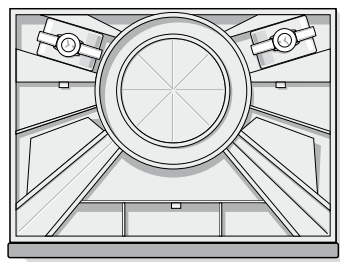
#### TRACKING SYSTEM

- Tracking system to protect your valuables
- Combination of GSM and Radio Frequency (RF) Technology
- Global coverage
- Web-based system, available for smartphones and tablets
- Easy access to search and locate functions at any time
- Battery capacity of up to 10 years
- GPS-independent, hence the ability to locate objects in buildings and similar

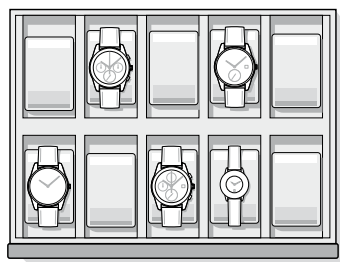
#### DRAWER INSERTS



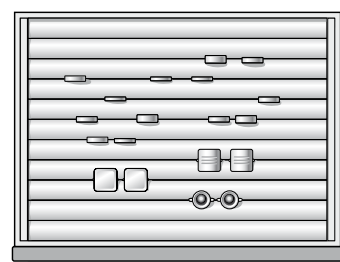
Gentleman



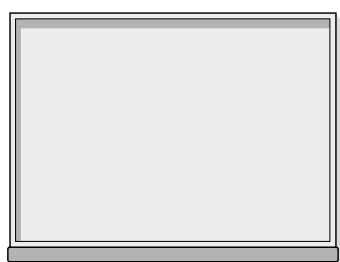
Jewellery



Watches

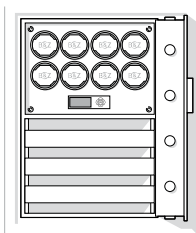


Cufflinks

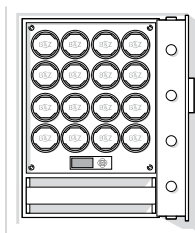


Universal

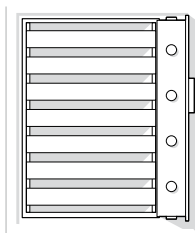




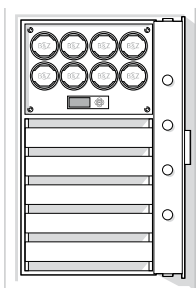
**SI-60**  
8 TIME MOVER®  
3 drawers (Standard)



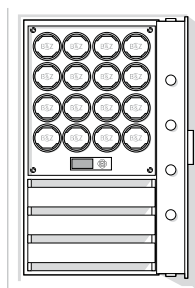
**SI-60**  
16 TIME MOVER®  
1 drawer (optional)



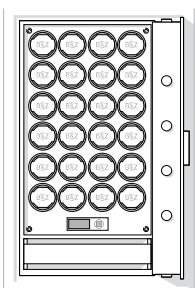
**SI-60**  
7 drawers  
(optional)



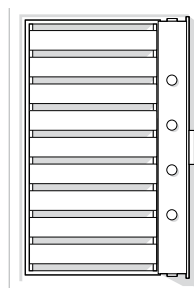
**SI-80**  
8 TIME MOVER®  
5 drawers (Standard)



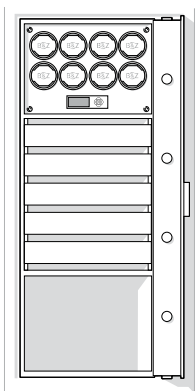
**SI-80**  
16 TIME MOVER®  
3 drawers (optional)



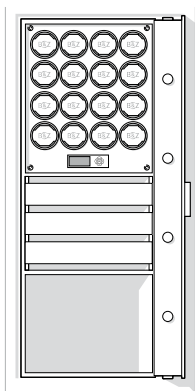
**SI-80**  
24 TIME MOVER®  
1 drawer (optional)



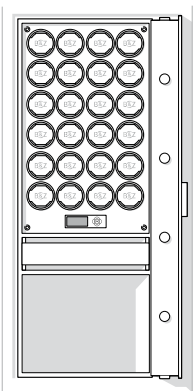
**SI-80**  
9 drawers  
(optional)



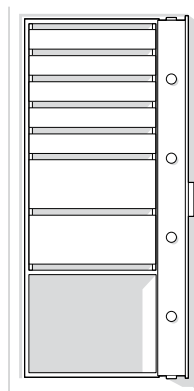
**SI-110**  
8 TIME MOVER®  
5 drawers  
Storage space  
(Standard)



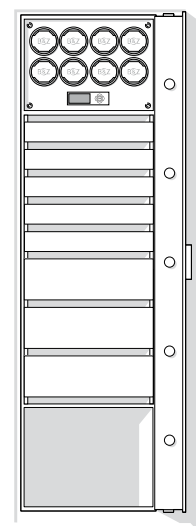
**SI-110**  
16 TIME MOVER®  
3 drawers  
Storage space  
(optional)



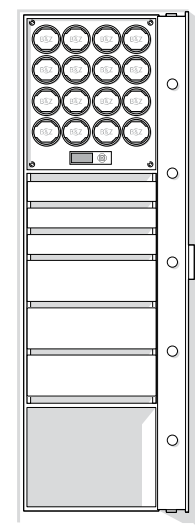
**SI-110**  
24 TIME MOVER®  
1 drawer  
Storage space  
(optional)



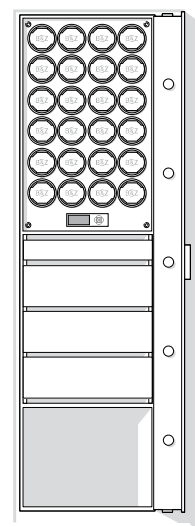
**SI-110**  
5 Schubladen  
2 large drawers  
Storage space  
(optional)



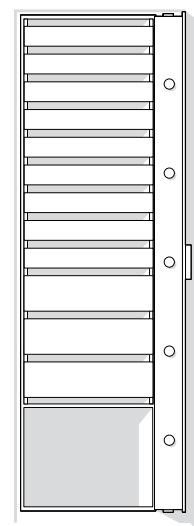
**SI-150**  
8 TIME MOVER®  
5 drawers  
3 large drawers  
Storage space



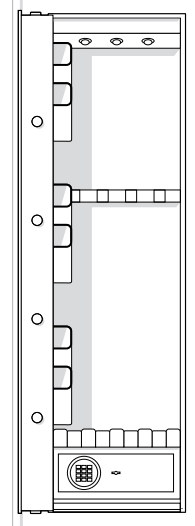
**SI-150**  
16 TIME MOVER®  
3 drawers  
3 large drawers  
Storage space



**SI-150**  
24 TIME MOVER®  
1 drawer  
3 large drawers  
Storage space



**SI-150**  
9 drawers  
3 large drawers  
Storage space



**SI-150**  
Gun Collector's Edition:  
Luxurious presentation for  
4 rifles and 6 handguns  
+ Safe for ammunition

## BUBEN&ZORWEG SAFES - FACTS

- German high-security safe with 8 stainless steel bolts
- Safety Class **Vds I** (German Security Certification)
- Electronic lock with keypad input
- Redundant system with keypad input and emergency-key
- State-of-the-art LED lighting technology with fading function
- Stainless steel handle with mother-of-pearl inlay
- Interior in finest velour
- Safe door covered in hand-stitched Italian nappa leather

## TECHNICAL DATA SAFE SI-60

- Dimensions: 600 x 490 x 415 mm
- Weight: ca. 140 kg

## SAFE SI-80

- Dimensions: 780 x 490 x 415 mm
- Weight: ca. 160 kg

## SAFE SI-110

- Dimensions: 1110 x 490 x 415 mm
- Weight: ca. 230 kg

## SAFE SI-150

- Dimensions: 1520 x 490 x 415 mm
- Weight: ca. 320 kg

#### IMPRINT

##### DESIGN, LAYOUT, TEXT, PRODUCTION:

Sterntaler Kommunikation & Werbung - [www.sterntaler.at](http://www.sterntaler.at)

##### PHOTO EDITING:

Jack Design - Karlsruhe - [www.walterjack.de](http://www.walterjack.de)

Werbeagentur Sterntaler - Graz

Arthouse - Linz

Flashpointstudio - Freiburg - [flashpointstudio.de](http://flashpointstudio.de)

##### PRINT:

Platinium Print & Art - Graz - [www.platinium.at](http://www.platinium.at)

##### RESPONSIBLE FOR CONTENT:

BUBEN&ZÖRWEG

Typographical and printing errors and other errors expected.

Technical and other changes to masterpieces reserved.

##### PHOTOGRAPHY:

Jack Design - Karlsruhe - [www.walterjack.de](http://www.walterjack.de)

Flashpointstudio - Freiburg - [flashpointstudio.de](http://flashpointstudio.de)

Sebastian Wagner - Linz

Gernot Langs - Schladming

BUBEN&ZÖRWEG

Kaba

CINCA SA

Iwan Baan

[istockphoto.com](http://istockphoto.com); [shutterstock.com](http://shutterstock.com); [fotolia.de](http://fotolia.de)

[gettyimages.com](http://gettyimages.com); Nuno Silva, Eric Hood; Paper Boat Creative

Ivan Hunter - Digital Vision - Getty Images

Aleksandra Pawloff - [www.pawloff.com](http://www.pawloff.com)

[www.photocase.com](http://www.photocase.com); Pischare

[nationalgeographicstock.com](http://nationalgeographicstock.com); Jodi Cobb, James P. Blair

and John E. Fletcher

stocksy - hugh sitton

500px - Gokcen Cidarm

[www.aclaimimages.com](http://www.aclaimimages.com)

Benediktinerstift Admont, Ernst Kren

Simon Möstl

Arroway Textures

STUDIODESIGN - Hans-Jörg Bug